

## Performer™ Series

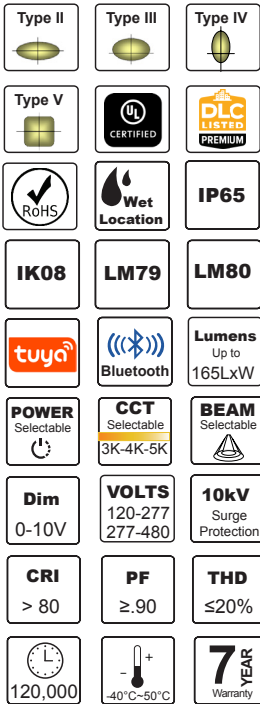
americanlite®

We light your world™



## Performer Pro X™

80w/100w/150w/200w/240w/300w  
CCT / Power / Beam Selectable



The Performer Pro X™ Series redefines what an LED area, site, and roadway luminaire can do, combining maximum performance, unmatched versatility, and exceptional value in a sleek, low-profile design. Engineered to replace 150W–1500W HID fixtures, it delivers energy savings of over 70% while meeting the most demanding lighting challenges.

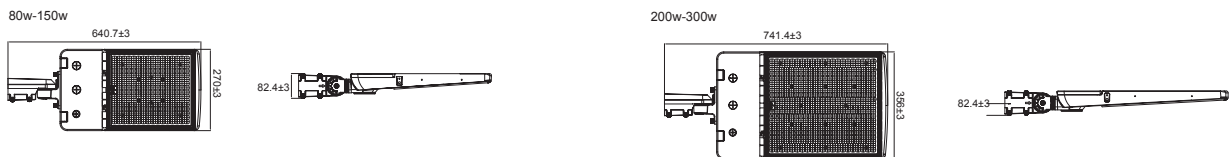
Equipped with Americanlite®'s advanced selectable technology, the Performer Pro X™ puts beam, CCT, and power control in your hands, offering 27 different configurations from a single fixture. High-efficiency molded optics paired with Lumileds® 2835 LED chips ensure optimized light distribution, superior application spacing, and uncompromising visual comfort.

From retrofit to new install, time is money and the Performer Pro X™ saves both. Its installer-friendly design speeds up mounting, while its innovative thermal management system maximizes heat dissipation to extend both fixture and LED lifespan. The rugged housing is polyester powder coated for superior resistance to fading, corrosion, and wear, with a standard bronze finish and optional white or gray colors available.

Every unit comes with a UL Class P, 0–10V dimming driver and internal 6kV surge protection, plus an external 10kV SPD for maximum defense against electrical surges. Optional 20kV SPD, motion sensors, and a full range of mounting brackets—including round, square, and yoke options—provide unmatched design flexibility for any application, whether building-mounted, pole-mounted, or roadway-installed.

Performer Pro X™ optics deliver uniform illumination for parking lots, walkways, building perimeters, roadways, and security zones. Designed to meet the toughest performance standards, it is not just a light—it is a complete lighting solution for the modern world.

### Dimensions (mm)



### Ordering information

Model	Power Select	CCT Select	Beam Select	Lumens
AL675388	80w/60w/50w	3K/4K/5K	III / IV / V	13200/9900/8250
AL675389	100w/80w/60w	3K/4K/5K	III / IV / V	16500/13200/9900
AL675390	150w/120w/100w	3K/4K/5K	III / IV / V	24750/19800/16500
AL675391	200w/175w/150w	3K/4K/5K	III / IV / V	33000/28875/24750
AL675392	240w/200w/150w	3K/4K/5K	III / IV / V	39600/33000/24750
AL675393	300w/240w/200w	3K/4K/5K	III / IV / V	49500/39600/33000

Brackets	
S	Slipfitter
Q	Square Pole
A	Round & Square Pole
Y	Yoke Bracket

Options	
Blank	3 Pin Base and Photocell
PB	3 Pin Photobase
WP	No Base / no photocell
7B	7 Pin Base
SH	Short Cap
S2	SPD 20kV #ZYS-P20A
MS	Motion Sensor # HB01DMS
R	Reducer x arm @ 35-45mm
V	Visor
48	277-480V
BT	Bluetooth MW Sensor #HB03DMS-A

Model	Power Select	CCT Select	Beam Select	Lumens
AL675394	80w/60w/50w	3K/4K/5K	II / III / IV	13200/9900/8250
AL675395	100w/80w/60w	3K/4K/5K	II / III / IV	16500/13200/9900
AL675396	150w/120w/100w	3K/4K/5K	II / III / IV	24750/19800/16500
AL675397	200w/175w/150w	3K/4K/5K	II / III / IV	33000/28875/24750
AL675398	240w/200w/150w	3K/4K/5K	II / III / IV	39600/33000/24750
AL675399	300w/240w/200w	3K/4K/5K	II / III / IV	49500/39600/33000

Housing	
Blank	Bronze
G	Gray
W	White

Accessory	
RC	Remote control for Sensor (HB03R)

### Notes

- Power & CCT Selectable 3K/4K/5K: Lumens based on 4000K  
5000K = 160 lxw  
4000K = 165 lxw  
3000K = 155 lxw
- Lumen tolerance up to 10%
- Driver Brand: Sosen
- LED Chips: Lumileds® 2835  
Total # LED Chips  
80w-150w: 500 pcs  
200w-300w: 936 pcs
- EPA:  
80w-150w = 1.36ft<sup>2</sup>  
200w-300w = 1.58ft<sup>2</sup>
- BUG:  
80w-150w = B3-U0-G3  
200w-300w = B4-U0-G4
- 3 Pin Photobase and Photocell are standard
- Housing wall thickness: >2mm
- PC Lens thickness: >7.5mm
- Cable:  
120-277V = UL certified, SJOW, Black color (Ø8±0.3MM), black/white/green wire core, wire 3×0.824MM2, 18AWG, 105°C, 300V (Standard wire is 1.2m, outside 1m)
- Salt chamber test: 168 hours
- 120K hours -Case Temperature 71°C
- Arm compartment:  
40-60mm / 40mm screws = standard with reducer = 34-45mm
- Paint Color:  
Bronze = RAL8019  
Gray = RAL7004  
White = RAL9010
- Paint thickness: 60-80µm
- Fixture Pass:  
IEC 60598-1  
IK08 = IEC 62262  
IP66 = IEC 60529  
Vibration Test GB/T 2423.10-2019  
3G = C136.31-2010  
SPD = IEC 61643 11  
Class type = Complies UL 1310 Standard / class 1 with grounded

### Packing information

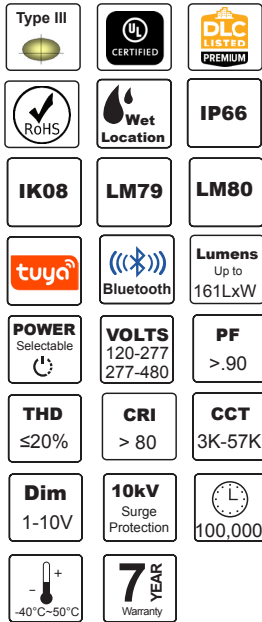
Model	Pieces per master	Box Dimensions (cm)	CBM (Master)	Gross Weight (KG)
80w-150w	1	73 x 33 x 15.3	0.0368	5.57
200w - 300w	1	83 x 41.6 x 15.3	0.0528	7.5

G.W. will vary per master when ordering mounting brackets



## Performer Pro™

100w/120w/150w/200w/240w/300w  
Single Power & Power Selectable



The Performer Pro™ Series luminaire introduces a new level of photometric performance; with an outstanding 160 lumens per watt, creates sites with excellent uniformity, greater pole spacing and lower power density and expected service life over 100,000 hours.

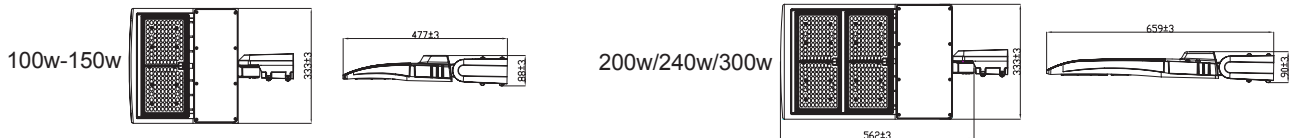
In streets, roads, parking and in general areas, the Performer Pro™ replaces 150-1000W metal halide lights. The distribution is shaped to maximize efficiency and application spacing using the precision molded high efficiency optics with Lumileds® 2835 led chips. The nominal lumen packages range from 9,600 to 48,000 and are offered in Type III distribution. With Americanlite® Power Selectable Technology™, you have more alternatives to meet the demands of your project.

The Performer Pro™ luminaire delivers an innovative thermal management design that maximizes heat dissipation resulting in longer fixture and LED life. Housing and cast parts are finished in polyester powder coat paint, for superior protection against fade and wear; the standard finish is bronze. (White color available). The UL 1-10V dimming IP67 driver, with internal 6KV surge protection, (L-N:6KV, L-PE:6KV), is mounted to the fixture for optimal heat sinking and ease of maintenance. We have added an external 10KV SPD for maximum protection.

When it comes to installing and retrofitting site and area luminaires, time is money. The Performer Pro™ is designed to reduce installation time and costs by being quick and simple to install. For even greater design versatility for any building mount, street, and road applications, optional round/square, yoke, and slipfitter brackets are offered. By including the optional MS and PIR Sensors, you can maximize your energy savings.

The designed optics from the Performer Pro™ Series offer uniform illumination for parking lots, streets, paths, interior spaces of buildings, and security lighting applications. These stylish lights offer exceptional illumination, simple installation, and the Americanlite® reliability you've come to expect.

### Dimensions (mm)



### Ordering information

Item	Power Select	Lumens
AL574381	100w/80w/60w	16000/12800/9600
AL574382	150w/120w/100w	24000/19200/16000
AL574383	200w/180w/150w	32000/28800/24000
AL574384	240w/200w/180w	38400/32000/28800
AL574385	300w/240w/200w	48000/38400/32000

Item	Single Power	Lumens
AL574386	120w	19200

CCT	Brackets	Options
<b>Blank</b> 5000K	<b>S</b> Slipfitter	<b>Blank</b> 3 Pin Base and Photocell
<b>57</b> 5700K	<b>Q</b> Square Pole	<b>PB</b> 3 Pin Photobase
<b>4</b> 4000K	<b>A</b> RD & SQ Pole	<b>WP</b> No Base / no photocell
<b>3</b> 3000K	<b>Y</b> Yoke Bracket	<b>7B</b> 7 Pin Base
		<b>S2</b> SPD 20KV
		<b>MS</b> Motion Sensor # HB01DMS
		<b>PM</b> PIR Sensor # HB02DPR
		<b>W</b> White Finish
		<b>RC</b> Remote control # HB03R
		<b>R</b> Reducer x arm @ 35-45mm
		<b>48</b> 277-480V
		<b>BT</b> Bluetooth MW Sensor # HB03DMS-A

### Notes

- Lumen tolerance up to 10%
- Lumens based on 5000K
  - 5700K = 161 lxw
  - 5000K = 160 lxw
  - 4000K = 158 lxw
  - 3000K = 155 lxw
- EPA:
  - 100-150w = 1.3R<sup>2</sup>
  - 200w-300w = 2.1R<sup>2</sup>
- Surge Protection:
  - 100w-200w: L-N-PE: 4KV, L-N: 4KV
  - 240w: L-N-PE: 6KV, L-N: 6KV
  - 300w: L-N-PE: 4KV, L-N: 4KV
- Photobase and Photocell are standard
- Driver Brand:
  - 100w-300w Weled
  - 240w Daemay
  - Driver Brand 200-480V = Fahold
- LED Modules:
  - 100 - 150w = 1
  - 200 - 300w = 2
- LED Chips: Lumileds® 2835
  - Total # LED Chips
  - 100w: 264 pcs
  - 120w: 322 pcs
  - 150w: 322 pcs
  - 200w: 528 pcs
  - 240w: 644 pcs
  - 300w: 644 pcs
- 100K hours -Case Temperature 66°C
- The cable is UL certified, SJOW, Black color (Φ8±0.3MM), black/white/green wire core, wire 3×0.824MM<sup>2</sup>, 18AWG, 105°C, 300V (Standard wire is 1.2m, outside 1m)
- 120w not available with Power Select or in 200-480V
- Housing wall thickness: >2mm
- PC Lens thickness: >7.8mm
- Salt chamber test: 400 hours
- Arm compartment:
  - 40-60mm / 40mm screws = standard with reducer = 34-45mm
- Paint Color:
  - Bronze = RAL8019
  - White = RAL9010
- Fixture Pass:
  - IEC 60598-1 & IEC 60598-2-3
  - IK08 = IEC 62262
  - IP66 = IEC 60529
  - Vibration Test - 60068-2-6
  - Vibration Test GB/T 2423.10-2019
  - 3G = C136.31-2010
  - SPD = IEC 61643 11
  - Class type = Complies UL 1310 Standard / class 1 with grounded

### Packing information

Model	Pieces per master	Box Dimensions (cm)	CBM (Master)	Gross Weight (KG)
100w-150w	1	57.5 x 39.5 x 16.5	0.0374	5.2
200w/240w	1	76 x 39.5 x 16.5	0.0495	7.5

G.W. will vary per master when ordering mounting brackets

## Performer PCS™

70w/100w/150w/200w/240w  
/300w/375w/480w

Power & CCT Selectable  
Single Power/CCT



With an exceptional up to 150 lumens per watt, the Performer PCS™ Series luminaire generates sites with superb uniformity, better pole spacing, reduced power density, and a projected service life of over 120,000 hours, introducing a new level of photometric performance.

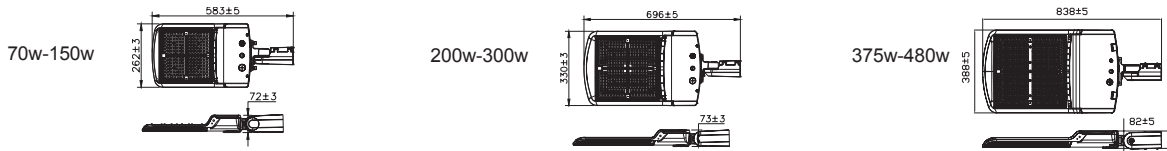
The Performer PCS™ replaces 150-1000W metal halide lights in streets, roads, parking lots, and other areas. Using custom molded high efficiency optics and Lumileds® 2835 led chips, the distribution is designed to maximize efficiency and application spacing. The nominal lumen packages are available in Type II, Type III, Type IV and Type V distributions and range in lumen output from 4,725 to 64,800. You have more options with Americanlite® CCT+ Power Selectable Technology™ or Single Power / CCT to satisfy the demands of your project.

Performer PCS™ luminaire delivers an innovative thermal management design that maximizes heat dissipation resulting in longer fixture and LED life. Housing and cast parts are finished in polyester powder coat paint, for superior protection against fade and wear; the standard finish is bronze. (White color available). The UL 0-10V dimming IP67 driver, with internal 6KV surge protection, (L-N:6KV, L-PE:6KV), is mounted to the fixture for optimal heat sinking and ease of maintenance. We have added an external 10KV SPD for maximum protection.

Time is money when it comes to installing and retrofitting area and site luminaires. The Performer PCS™ was engineered to make installation quick and easy; the electric compartment access is tool-less saving on both installation time and costs. Round/square, yoke, and slipfitter brackets are optional and can be used for building mount, street, and road applications for even more design flexibility. You can increase the amount of energy you save by adding the optional MS and PIR Sensors.

The Performer PCS™ Series' engineered optics provide uniform illumination for parking lots, streets, walkways, building interiors, and security lighting applications. These fashionable lights provide excellent illumination, easy installation, and the dependability you've come to expect from Americanlite®.

### Dimensions (mm)



### Ordering information

#### Power & CCT Selectable 3K / 4K / 5K

Model	Power	Beam	Lumens
AL576305	70w/50w/35w	Type II	9450/6750/4725
AL576306	100w/80w/60w	Type II	13500/10800/8100
AL576307	150w/120w/80w	Type II	20250/16200/10800
AL576308	200w/175w/150w	Type II	27000/23625/20250
AL576309	240w/200w/150w	Type II	32400/27000/20250
AL576310	300w/240w/200w	Type II	40500/32400/27000
AL576392	375w/300w/240w	Type II	50625/40500/32400
AL576393	480w/400w/300w	Type II	64800/54000/40500
AL576311	70w/50w/35w	Type III	9450/6750/4725
AL576312	100w/80w/60w	Type III	13500/10800/8100
AL576313	150w/120w/80w	Type III	20250/16200/10800
AL576314	200w/175w/150w	Type III	27000/23625/20250
AL576315	240w/200w/150w	Type III	32400/27000/20250
AL576316	300w/240w/200w	Type III	40500/32400/27000
AL576394	375w/300w/240w	Type III	50625/40500/32400
AL576329	480w/400w/300w	Type III	64800/54000/40500

#### Power & CCT Selectable 3K / 4K / 5K

Model	Power	Beam	Lumens
AL576317	70w/50w/35w	Type IV	9450/6750/4725
AL576318	100w/80w/60w	Type IV	13500/10800/8100
AL576319	150w/120w/80w	Type IV	20250/16200/10800
AL576320	200w/175w/150w	Type IV	27000/23625/20250
AL576321	240w/200w/150w	Type IV	32400/27000/20250
AL576322	300w/240w/200w	Type IV	40500/32400/27000
AL576395	375w/300w/240w	Type IV	50625/40500/32400
AL576396	480w/400w/300w	Type IV	64800/54000/40500
AL576323	70w/50w/35w	Type V	9450/6750/4725
AL576324	100w/80w/60w	Type V	13500/10800/8100
AL576325	150w/120w/80w	Type V	20250/16200/10800
AL576326	200w/175w/150w	Type V	27000/23625/20250
AL576327	240w/200w/150w	Type V	32400/27000/20250
AL576328	300w/240w/200w	Type V	40500/32400/27000
AL576397	375w/300w/240w	Type V	50625/40500/32400
AL576398	480w/400w/300w	Type V	64800/54000/40500

#### Power & CCT Selectable 4K / 5K / 65K

Model	Power	Beam	Lumens
AL576351	200w/150w/100w	Type II	30000/22500/15000
AL576352	200w/150w/100w	Type III	30000/22500/15000
AL576353	200w/150w/100w	Type IV	30000/22500/15000
AL576354	200w/150w/100w	Type V	30000/22500/15000

#### Brackets

- S Slipfitter
- Q Square Pole
- A Round & Square Pole
- Y Yoke Bracket

#### Options

- Blank 3 Pin Base and Photocell
- PB 3 Pin Photobase
- WP No Base / no photocell
- 7B 7 Pin Base
- S2 SPD 20KV
- MS Motion Sensor
- PM PIR Sensor
- W White Finish
- RC Remote control
- R Reducer x arm @ 35-45mm
- 48 277-480V
- BT Bluetooth MW Sensor

#### Single Power / CCT 5000K

Model	Power	Beam	Lumens
AL576500	70w	Type II	9660
AL576501	100w	Type II	13800
AL576502	150w	Type II	20700
AL576503	200w	Type II	27600
AL576504	240w	Type II	33120
AL576505	300w	Type II	41400
AL576506	375w	Type II	51750
AL576507	480w	Type II	66240

Model	Power	Beam	Lumens
AL576508	70w	Type III	9660
AL576509	100w	Type III	13800
AL576510	150w	Type III	20700
AL576511	200w	Type III	27600
AL576512	240w	Type III	33120
AL576513	300w	Type III	41400
AL576514	375w	Type III	51750
AL576515	480w	Type III	66240

Model	Power	Beam	Lumens
AL576516	70w	Type IV	9660
AL576517	100w	Type IV	13800
AL576518	150w	Type IV	20700
AL576519	200w	Type IV	27600
AL576520	240w	Type IV	33120
AL576521	300w	Type IV	41400
AL576522	375w	Type IV	51750
AL576523	480w	Type IV	66240

Model	Power	Beam	Lumens	CCT
AL576524	70w	Type V	9660	Blank 5000K
AL576525	100w	Type V	13800	65 6500K
AL576526	150w	Type V	20700	57 5700K
AL576527	200w	Type V	27600	4 4000K
AL576528	240w	Type V	33120	3 3000K
AL576529	300w	Type V	41400	
AL576530	375w	Type V	51750	
AL576531	480w	Type V	66240	

### Notes

- Lumen tolerance up to 10%
- Lumens based on 5000K
- 3000K = 130 lw
- 4000K = 145 lw
- 5000K = 135 lw
- 4K/5K/65K= NO DLC
- 4000K = 140 lw
- 5000K = 150 lw
- 6500K = 145 lw
- Lumens Single Power based 5K
- 3000K = 133 lw
- 4000K = 135 lw
- 5000K = 138 lw
- 5700K = 140 lw
- 6500K = 141 lw
- Driver Brand = 100w-480w Sosen
- 200-480V = Fahold
- EPA:
- 70w-150w=1.2ft<sup>2</sup>
- 200w-300w=1.92ft<sup>2</sup>
- 375w-480w=2.76ft<sup>2</sup>
- Photobase and Photocell are standard
- Surge Protection:
- 70w-480w: L/N-PE: 6KV, L-N: 6KV
- 200-480V: L/N-PE: 10KV, L-N: 6KV
- LED Chips: Lumileds® 2835
- Total # LED Chips
- 70w: 168 pcs
- 100w: 240 pcs
- 150w: 364 pcs
- 200w: 468 pcs
- 240w: 576 pcs
- 300w: 728 pcs
- 375w: 900 pcs
- 480w: 1120 pcs
- The cable is UL certified, SJOW, Black color (ø8±0.3MM), black/white/green wire core, wire 3øx0.824MM2, 18AWG, 105°C, 300V (Standard wire is 1.2m, outside 1m)
- Housing wall thickness: >2mm
- PC Lens thickness: >7.5mm
- Salt chamber test: 400 hours
- 120,000 hours < 65°C Case Temperature
- Arm compartment: 40-60mm / 40mm screws = standard with reducer = 34-45mm
- Paint Color: Bronze = RAL8019 White = RAL9010
- MS # HB01DMS
- PC # HB02DPR
- RC # HB03R
- BT # HB03DMS-A
- Fixture Pass: IEC 60598-1 & IEC 60598-2-3 IK08 = IEC 62262 IP66 = IEC 60529 Vibration Test - 60068-2-6 Vibration Test GB/T 2423.10-2019 3G = C136.31-2010 SPD = IEC 61643 11 Class type = Complies UL 1310 Standard / Class 1 with grounded

### Packing information

Model	Pieces per master	Box Dimensions (cm)	CBM (Master)	Gross Weight (KG)
70w-150w	1	66 x 32 x 15.8	0.0333	4.9
200w-300w	1	77.5 x 39 x 15.8	0.0477	6.4
375w-480w	1	92.5 x 47 x 17	0.0739	12

G.W. will vary per master when ordering mounting brackets

## Performer XCR™

80w/100w/150w/200w/240w/300w/450w  
Power & CCT Selectable



Type II	Type III	Type IV
Type V	UL CERTIFIED	DLC LISTED PREMIUM
RoHS	Wet Location	IP66
IK08	LM79	LM80
tuya	Bluetooth	Lumens Up to 150LxW
POWER Selectable	CCT Selectable 3K-4K-5K	Dim 0-10V
VOLTS 120-277 277-480	10kV Surge Protection	CRI > 80
PF ≥.90	THD ≤20%	120,000
-40°C-50°C	6 YEAR Warranty	

With an exceptional 150 lumens per watt, the Performer XCR™ Series luminaire generates sites with superb uniformity, better pole spacing, reduced power density, and a projected service life of over 120,000 hours, introducing a new level of photometric performance.

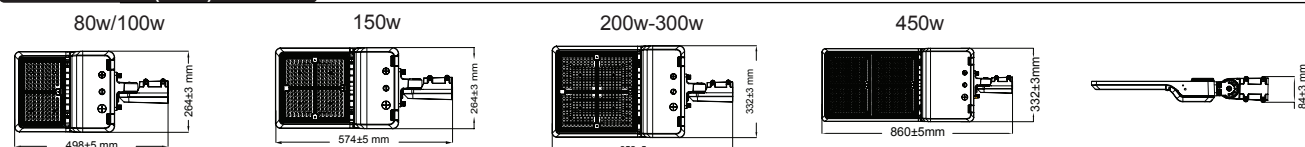
The Performer XCR™ replaces 150-1500W metal halide lights in streets, roads, parking lots, and other areas. Using custom molded high efficiency optics and Lumileds® 2835 led chips, the distribution is designed to maximize efficiency and application spacing. The nominal lumen packages are available in Type II, Type III, Type IV and Type V distributions and range in lumen output from 11,200 to 63,900. You have more options with Americanlite® CCT+ Power Selectable Technology™ to satisfy the demands of your project.

Performer XCR™ luminaire delivers an innovative thermal management design that maximizes heat dissipation resulting in longer fixture and LED life. Housing and cast parts are finished in polyester powder coat paint, for superior protection against fade and wear; the standard finish is bronze. (white and gray color available). The UL 0-10V dimming IP67 driver, with internal 6KV surge protection, (L-N:6KV, L-PE:6KV), is mounted to the fixture for optimal heat sinking and ease of maintenance. We have added an external 10KV SPD for maximum protection.

Time is money when it comes to installing and retrofitting area and site luminaires. The Performer XCR™ was engineered to make installation quick and easy; the electric compartment access is tool-less saving on both installation time and costs. Round/square, yoke, and slipfitter brackets are optional and can be used for building mount, street, and road applications for even more design flexibility. You can increase the amount of energy you save by adding the optional Motion Sensor.

The Performer XCR™ Series engineered optics provide uniform illumination for parking lots, streets, walkways, building interiors, and security lighting applications. These fashionable lights provide excellent illumination, easy installation, and the dependability you've come to expect from Americanlite®.

### Dimensions (mm)



### Ordering information

#### Power & CCT Selectable 3K/4K/5K

Item	Power Select	Beam	Lumens
AL675300	80w/60w/50w	II	11200/8400/7000
AL675301	100w/80w/60w	II	14000/11200/8400
AL675302	150w/120w/100w	II	21000/16800/14000
AL675303	200w/180w/150w	II	28000/25200/21000
AL675304	240w/220w/200w	II	33600/30800/28000
AL675305	300w/240w/200w	II	42000/33600/28000
AL675306	450w/420w/380w	II	63000/58800/53200

Item	Power Select	Beam	Lumens
AL675307	80w/60w/50w	III	11200/8400/7000
AL675308	100w/80w/60w	III	14000/11200/8400
AL675309	150w/120w/100w	III	21000/16800/14000
AL675310	200w/180w/150w	III	28000/25200/21000
AL675311	240w/220w/200w	III	33600/30800/28000
AL675312	300w/240w/200w	III	42000/33600/28000
AL675313	450w/420w/380w	III	63000/58800/53200

#### Brackets

S	Slipfitter
Q	Square Pole
A	Round & Square Pole
Y	Yoke Bracket

#### Options

Blank	3 Pin Base and Photocell
PB	3 Pin Photobase
WP	No Base / no photocell
7B	7 Pin Base
S2	SPD 20KV
MS	Motion Sensor #HB01DMS
RC	Remote control #HB03R
R	Reducer x arm @ 35-45mm
48	277-480V
BT	Bluetooth MW Sensor #HB03DMS-A

#### Housing

Blank	Bronze
G	Gray
W	White

Item	Power Select	Beam	Lumens
AL675314	80w/60w/50w	IV	11200/8400/7000
AL675315	100w/80w/60w	IV	14000/11200/8400
AL675316	150w/120w/100w	IV	21000/16800/14000
AL675317	200w/180w/150w	IV	28000/25200/21000
AL675318	240w/220w/200w	IV	33600/30800/28000
AL675319	300w/240w/200w	IV	42000/33600/28000
AL675320	450w/420w/380w	IV	63000/58800/53200

Item	Power Select	Beam	Lumens
AL675321	80w/60w/50w	V	11200/8400/7000
AL675322	100w/80w/60w	V	14000/11200/8400
AL675323	150w/120w/100w	V	21000/16800/14000
AL675324	200w/180w/150w	V	28000/25200/21000
AL675325	240w/220w/200w	V	33600/30800/28000
AL675326	300w/240w/200w	V	42000/33600/28000
AL675327	450w/420w/380w	V	63000/58800/53200

### Notes

- Power & CCT Selectable 3K/4K/5K: Lumens based on 5000K  
5000K = 140 lw  
4000K = 150 lw  
3000K = 130 lw
- Lumen tolerance up to 10%
- Driver Brand: 120-277V = Sosen  
277-480V = Fahold
- EPA: 80w/100w= 0.27R<sup>2</sup>  
150w= 0.384<sup>2</sup>  
200w-300w= 0.468ft<sup>2</sup>  
450w= 0.61ft<sup>2</sup>
- 120K hours -Case Temperature 65°C
- 3 Pin Photobase and Photocell are standard
- Housing wall thickness: >2mm
- PC Lens thickness: >7.5mm
- LED Chips: Lumileds® 2835  
Total # LED Chips  
80w: 240 pcs  
100w: 240 pcs  
150w: 364 pcs  
200w: 468 pcs  
240w: 576 pcs  
300w: 728 pcs  
450w: 1080 pcs
- Cable: 120-277V = UL certified, SJOW, Black color (Ø±0.3MM), black/white/green wire core, wire 3×0.824MM2, 18AWG, 105°C, 300V (Standard wire is 1.2m, outside 1m)
- Salt chamber test: 72 hours
- Arm compartment: 40-60mm / 40mm screws = standard with reducer = 34-45mm
- Paint Color: Bronze = RAL8019  
Gray = RAL7004  
White = RAL9010
- BUG: 80w/150w = B3-U0-G2  
100w = B3-U0-G3  
200w/240w = B4-U0-G3  
300w/450w = B5-U0-G3
- Fixture Pass: IEC 60598-1 & IEC 60598-2-3  
IK08 = IEC 62262  
IP66 = IEC 60529  
Vibration Test - 60068-2-6  
Vibration Test GB/T 2423.10-2019  
3G = C136.31-2010  
SPD = IEC 61643 11  
Class type = Complies UL 1310 Standard / class 1 with grounded

### Packing information

Model	Pieces per master	Box Dimensions (cm)	CBM (Master)	Gross Weight (KG)
80w/100w	1	56 x 31.2 x 14.8	0.0289	3.98
150w	1	64 x 31.2 x 14.8	0.0330	4.62
200w-300w	1	72 x 38 x 14.8	0.0449	5.58
450w	1	93.5 x 38 x 14.3	0.0563	8.8

G.W. will vary per master when ordering mounting brackets

## Performer XCR™

80w/100w/150w/200w/240w/300w/450w  
Power Selectable



Type II	Type III	Type IV
Type V	UL CERTIFIED	DLC M3725 PREMIUM
RoHS	Wet Location	IP66
IK08	LM79	LM80
tuya®	Bluetooth	Lumens Up to 140LxW
POWER Selectable	CCT 3K-65K	Dim 0-10V
VOLTS 120-277 277-480	10kV Surge Protection	CRI > 80
PF ≥.90	THD ≤20%	120,000
-40°C~50°C	6 YEAR Warranty	

With an exceptional 150 lumens per watt, the Performer XCR™ Series luminaire generates sites with superb uniformity, better pole spacing, reduced power density, and a projected service life of over 120,000 hours, introducing a new level of photometric performance.

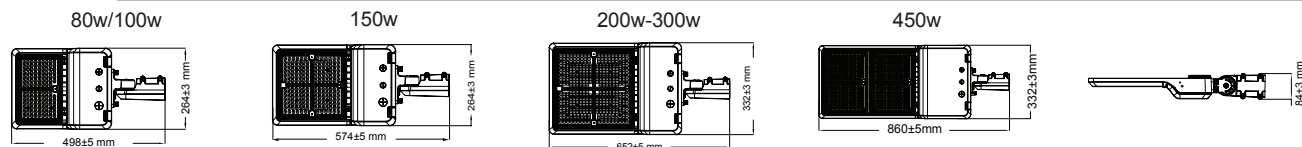
The Performer XCR™ replaces 150-1500W metal halide lights in streets, roads, parking lots, and other areas. Using custom molded high efficiency optics and Lumileds® 2835 led chips, the distribution is designed to maximize efficiency and application spacing. The nominal lumen packages are available in Type II, Type III, Type IV and Type V distributions and range in lumen output from 11,200 to 63,900. You have more options with Americanlite® Power Selectable Technology™ to satisfy the demands of your project.

Performer XCR™ luminaire delivers an innovative thermal management design that maximizes heat dissipation resulting in longer fixture and LED life. Housing and cast parts are finished in polyester powder coat paint, for superior protection against fade and wear; the standard finish is bronze. (white and gray color available). The UL 0-10V dimming IP67 driver, with internal 6KV surge protection, (L-N:6KV, L-PE:6KV), is mounted to the fixture for optimal heat sinking and ease of maintenance. We have added an external 10KV SPD for maximum protection.

Time is money when it comes to installing and retrofitting area and site luminaires. The Performer XCR™ was engineered to make installation quick and easy; the electric compartment access is tool-less saving on both installation time and costs. Round/square, yoke, and slipfitter brackets are optional and can be used for building mount, street, and road applications for even more design flexibility. You can increase the amount of energy you save by adding the optional Motion Sensors.

The Performer XCR™ Series engineered optics provide uniform illumination for parking lots, streets, walkways, building interiors, and security lighting applications. These fashionable lights provide excellent illumination, easy installation, and the dependability you've come to expect from Americanlite®.

### Dimensions (mm)



### Ordering information

#### Power Selectable

Item	Power Select	Beam	Lumens	Item	Power Select	Beam	Lumens
AL675328	80w/60w/50w	II	11200/8400/7000	AL675335	80w/60w/50w	III	11200/8400/7000
AL675329	100w/80w/60w	II	14000/11200/8400	AL675336	100w/80w/60w	III	14000/11200/8400
AL675330	150w/120w/100w	II	21000/16800/14000	AL675337	150w/120w/100w	III	21000/16800/14000
AL675331	200w/180w/150w	II	28000/25200/21000	AL675338	200w/180w/150w	III	28000/25200/21000
AL675332	240w/220w/200w	II	33600/30800/28000	AL675339	240w/220w/200w	III	33600/30800/28000
AL675333	300w/240w/200w	II	42000/33600/28000	AL675340	300w/240w/200w	III	42000/33600/28000
AL675334	450w/420w/380w	II	63000/58800/53200	AL675341	450w/420w/380w	III	63000/58800/53200

Item	Power Select	Beam	Lumens	Item	Power Select	Beam	Lumens
AL675342	80w/60w/50w	IV	11200/8400/7000	AL675349	80w/60w/50w	V	11200/8400/7000
AL675343	100w/80w/60w	IV	14000/11200/8400	AL675350	100w/80w/60w	V	14000/11200/8400
AL675344	150w/120w/100w	IV	21000/16800/14000	AL675351	150w/120w/100w	V	21000/16800/14000
AL675345	200w/180w/150w	IV	28000/25200/21000	AL675352	200w/180w/150w	V	28000/25200/21000
AL675346	240w/220w/200w	IV	33600/30800/28000	AL675353	240w/220w/200w	V	33600/30800/28000
AL675347	300w/240w/200w	IV	42000/33600/28000	AL675354	300w/240w/200w	V	42000/33600/28000
AL675348	450w/420w/380w	IV	63000/58800/53200	AL675355	450w/420w/380w	V	63000/58800/53200

CCT	Brackets
Blank 5000K	S Slipfitter
6 6500K	Q Square Pole
7 5700K	A Round & Square Pole
4 4000K	Y Yoke Bracket
3 3000K	
Options	
Blank 3 Pin Base and Photocell	
PB 3 Pin Photobase	
WP No Base / no photocell	
7B 7 Pin Base	
S2 SPD 20KV	
MS Motion Sensor #HB01DMS	
RC Remote control #HB03R	
R Reducer x arm @ 35-45mm	
48 277-480V	
BT Bluetooth Sensor #HB03DMS-A	
Housing	
Blank Bronze	
G Gray	
W White	

### Notes

- Lumens based on 5000K 4000K-6500K = 140 lkw 2700K/3000K = 130 lkw 6500K = No DLC
- Lumen tolerance up to 10%
- Driver Brand: 120-277V = Sosen 277-480V = Fahold
- EPA: 80w/100w= 0.27ft² 150w= 0.384² 200w-300w= 0.468ft² 450w= 0.61ft²
- 120K hours -Case Temperature 65°C
- 3 Pin Photobase and Photocell are standard
- Housing wall thickness: >2mm
- PC Lens thickness: >7.5mm
- LED Chips: Lumileds® 2835 Total # LED Chips= 80w: 120 pcs 100w: 120 pcs 150w: 182 pcs 200w: 240 pcs 240w: 288 pcs 300w: 364 pcs 450w: 540 pcs
- Cable: 120-277V = UL certified, SJOW, Black color (Ø8±0.3MM), black/white/green wire core, wire 3×0.824MM2, 18AWG, 105°C, 300V (Standard wire is 1.2m, outside 1m)
- Salt chamber test: 72 hours
- Arm compartment: 40-60mm / 40mm screws = standard with reducer = 34-45mm
- Paint Color: Bronze = RAL8019 Gray = RAL7004 White = RAL9010
- BUG: 80w/150w = B3-U0-G2 100w = B3-U0-G3 200w/240w = B4-U0-G3 300w/450w = B5-U0-G3
- Fixture Pass: IEC 60598-1 & IEC 60598-2-3 IK08 = IEC 62262 IP66 = IEC 60529 Vibration Test - 60068-2-6 Vibration Test GB/T 2423.10-2019 3G = C136.31-2010 SPD = IEC 61643 11 Class type = Complies UL 1310 Standard / class 1 with grounded

### Packing information

Model	Pieces per master	Box Dimensions (cm)	CBM (Master)	Gross Weight (KG)
80w/100w	1	57 x 32.2 x 15.8	0.0289	3.98
150w	1	65 x 32.2 x 15.8	0.0330	4.62
200w-300w	1	73 x 39 x 15.8	0.0449	5.58
450w	1	94.5 x 39 x 15.3	0.0563	8.8

G.W. will vary per master when ordering mounting brackets

# Performer XR™

80w/ 90w/100w/150w  
200w/240w/300w/450w



Type II	Type III	Type IV
Type V	UL CERTIFIED	PLC LISTED PREMIUM
RoHS	Wet Location	IP66
IK08	LM79	LM80
tuya	Bluetooth	Lumens Up to 150LxW
POWER Selectable	CCT 3K-65K	Dim 0-10V
VOLTS 120-277 277-480	10kV Surge Protection	CRI > 80
PF ≥.90	THD ≤20%	120,000
-40°C-50°C	6 YEAR Warranty	

The Performer XR™ Series LED area-site-roadway luminaire introduces a new level of performance, versatility and value in a low-profile design that delivers significant installation and energy savings greater than 70%. The Performer XR™ replaces 150-1500W metal halide fixtures in general area and roadway lighting applications.

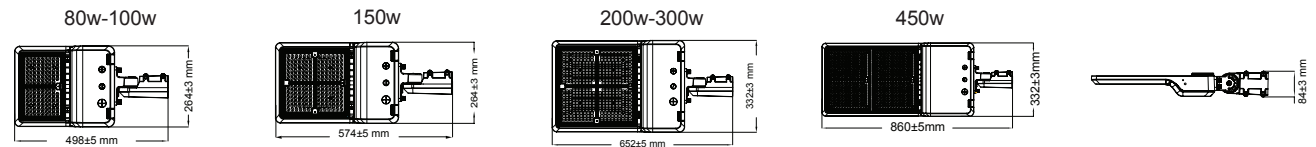
Time is money when it comes to installing and retrofitting area and site luminaires. The Performer XR™ was engineered to make installation quick and easy; the electric compartment access is tool-less saving on both installation time and costs. The Performer XR™ luminaire delivers an innovative thermal management design that maximizes heat dissipation resulting in longer fixture and LED life. Housing and cast parts are finished in polyester powder coat paint, for superior protection against fade and wear; the standard finish is bronze (white and gray color available).

Performer XR™ high efficiency molded optics, with Lumileds® 2835 led chips, are designed to shape the distribution, maximizing efficiency and application spacing, available in Type II, III, IV and V distributions with lumen packages ranging from 11,200 to 63,900 nominal lumens. The UL 120-277V 0-10V dimming IP67 driver, with internal 6KV surge protection, (L-N-6kV, L-PE:6kV), is mounted to the fixture for optimal heat sinking and ease of maintenance. We have added an external 10KV SPD for maximum protection.

Optional round / square & yoke brackets, Motion Sensor, 20KV SPD are available for even more design flexibility for any building mount, street and roadway applications.

The Performer XR™ engineered optics provide uniform illumination to walkways, parking lots, roadways, building areas and security lighting applications. Able to replace HID fixtures the Performer XR™ is designed to meet the toughest lighting challenges.

## Dimensions (mm)



## Ordering information

Model	Power	Beam	Lumens
AL576360	80w	Type II	11,200
AL576361	90w	Type II	13,500
AL576362	100w	Type II	14,000
AL576363	150w	Type II	21,000
AL576364	200w	Type II	28,000
AL576365	240w	Type II	33,600
AL576366	300w	Type II	42,000
AL576367	450w	Type II	63,000

Model	Power	Beam	Lumens
AL576368	80w	Type III	11,200
AL576369	90w	Type III	13,500
AL576370	100w	Type III	14,000
AL576371	150w	Type III	21,000
AL576372	200w	Type III	28,000
AL576373	240w	Type III	33,600
AL576374	300w	Type III	42,000
AL576375	450w	Type III	63,000

CCT	Blankets
Blank	5000K
6	6500K
7	5700K
4	4000K
3	3000K

Brackets	
S	Slipfitter
Q	Square Pole
A	Round & Square Pole
Y	Yoke Bracket

Options	
Blank	3 Pin Base and Photocell
PB	3 Pin Photobase
WP	No Base / no photocell
7B	7 Pin Base
S2	SPD 20KV
MS	Motion Sensor (# HB01DMS)
RC	Remote control (HB03R)
R	Reducer x arm @ 35-45mm
48	277-480V
BT	Bluetooth Sensor #HB03DMS-A

Model	Power	Beam	Lumens
AL576376	80w	Type IV	11,200
AL576377	90w	Type IV	13,500
AL576378	100w	Type IV	14,000
AL576379	150w	Type IV	21,000
AL576380	200w	Type IV	28,000
AL576381	240w	Type IV	33,600
AL576382	300w	Type IV	42,000
AL576383	450w	Type IV	63,000

Model	Power	Beam	Lumens
AL576384	80w	Type V	11,200
AL576385	90w	Type V	13,500
AL576386	100w	Type V	14,000
AL576387	150w	Type V	21,000
AL576388	200w	Type V	28,000
AL576389	240w	Type V	33,600
AL576390	300w	Type V	42,000
AL576391	450w	Type V	63,000

Housing	
Blank	Bronze
G	Gray
W	White

## Notes

- Lumens based on 5000K 4000K-6500K = 140 lw 2700K/3000K = 130 lw 6500K = No DLC
- Lumens for 90w = 4000K-6500K = 150 lw 2700K/3000K = 140 lw
- Lumen tolerance up to 10%
- Driver Brand: 120-277V = Sosen 277-480V = Fahold 90w = Lifud
- EPA: 80w-100w= 0.27ft² 150w= 0.384² 200w-300w= 0.468ft² 450w= 0.61ft²
- 120K hours -Case Temperature 65°C
- 3 Pin Photobase and Photocell are standard
- Housing wall thickness: >2mm
- PC Lens thickness: >7.5mm
- LED Chips: Lumileds® 2835 Total # LED Chips= 80w: 120 pcs 90w: 120 pcs 100w: 120 pcs 150w: 182 pcs 200w: 240 pcs 240w: 288 pcs 300w: 364 pcs 450w: 540 pcs
- Cable: 120-277V = UL certified, SJOW, Black color (Φ8±0.3MM), black/white/green wire core, wire 3\*0.824MM2, 18AWG, 105°C, 300V (Standard wire is 1.2m, outside 1m)
- Salt chamber test: 72 hours
- Arm compartment: 40-60mm / 40mm screws = standard with reducer = 34-45mm
- Paint Color: Bronze = RAL8019 Gray = RAL7004 White = RAL9010
- BUG: 80w/150w = B3-U0-G2 90w/100w = B3-U0-G3 200w/240w = B4-U0-G3 300w/450w = B5-U0-G3
- Fixture Pass: IEC 60598-1 & IEC 60598-2-3 IK08 = IEC 62262 IP66 = IEC 60529 Vibration Test - 60068-2-6 Vibration Test GB/T 2423.10-2019 3G = C136.31-2010 SPD = IEC 61643 11 Class type = Complies UL 1310 Standard / class 1 with grounded

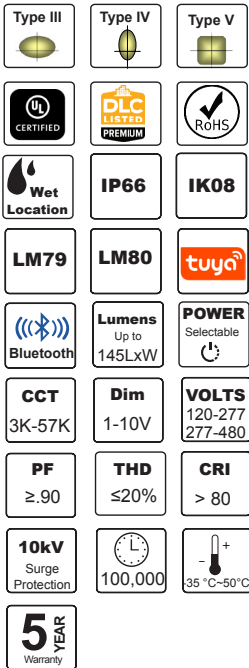
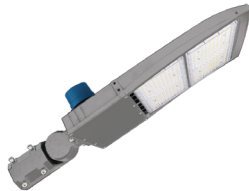
## Packing information

Model	Pieces per master	Box Dimensions (cm)	CBM (Master)	Gross Weight (KG)
80w-100w	1	57 x 32.2 x 15.8	0.0289	3.98
150w	1	65 x 32.2 x 15.8	0.0330	4.62
200w-300w	1	73 x 39 x 15.8	0.0449	5.58
450w	1	95.5 x 39 x 15.3	0.0563	8.8

G.W. will vary per master when ordering mounting brackets

## Performer XCS™

100w/150w/200w/240w/300w/450w  
Power Selectable



The Performer XCS™ Series LED area/site luminaire introduces a new level of performance, versatility and value in a low-profile design that delivers significant installation and energy savings greater than 70%.

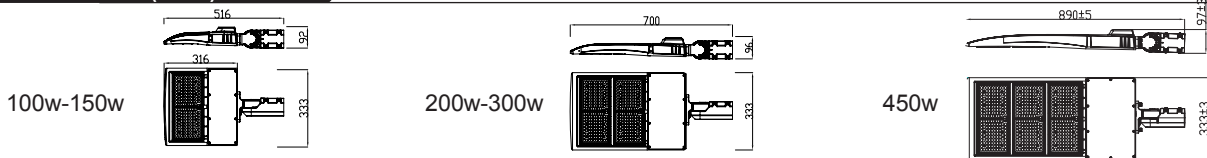
The Performer XCS™ replaces 150-1000W metal halide fixtures in general area lighting applications. The Performer XCS™ luminaire delivers an innovative thermal management design that maximizes heat dissipation resulting in longer fixture and LED life. Housing and cast parts are finished in polyester powder coat paint, for superior protection against fade and wear; the standard finish is gray (bronze and white color available). The UL 120-277V 1-10V dimming IP67 driver, with internal 6KV surge protection, (L-N-6kV, L-PE:6kV), is mounted to the fixture for optimal heat sinking and ease of maintenance. We have added an external 10KV SPD for maximum protection.

The precision molded high efficiency optics, with Lumileds® 2835 led chips, are designed to shape the distribution, maximizing efficiency and application spacing. Available in Type III, IV and V distributions with lumen packages ranging from 14,200 to 63,900 nominal lumens.

Time is money when it comes to installing and retrofitting area and site luminaires. The Performer XCS™ was engineered to make installation quick and easy, saving on both installation time and costs. Optional round / square, yoke and slipfitter brackets are available for even more design flexibility for any building mount, street and roadway applications.

The Performer XCS™ engineered optics provide uniform illumination to walkways, parking lots, roadways, building areas and security lighting applications. Able to replace HID fixtures the Performer XCS™ is designed to meet the toughest lighting challenges.

### Dimensions (mm)



### Ordering information

Item	Power Select	Beam	Lumens	Item	Power Select	Beam	Lumens	Item	Power Select	Beam	Lumens
AL675270	100w/80w/60w	III	14200/11360/8520	AL675277	100w/80w/60w	IV	14200/11360/8520	AL675284	100w/80w/60w	V	14200/11360/8520
AL675271	100w/90w/80w	III	14200/12780/11360	AL675278	100w/90w/80w	IV	14200/12780/11360	AL675285	100w/90w/80w	V	14200/12780/11360
AL675272	150w/120w/100w	III	21300/17040/14200	AL675279	150w/120w/100w	IV	21300/17040/14200	AL675286	150w/120w/100w	V	21300/17040/14200
AL675273	200w/180w/150w	III	28400/25560/21300	AL675280	200w/180w/150w	IV	28400/25560/21300	AL675287	200w/180w/150w	V	28400/25560/21300
AL675274	240w/200w/180w	III	34080/28400/25560	AL675281	240w/200w/180w	IV	34080/28400/25560	AL675288	240w/200w/180w	V	34080/28400/25560
AL675275	300w/240w/200w	III	42600/34080/28400	AL675282	300w/240w/200w	IV	42600/34080/28400	AL675289	300w/240w/200w	V	42600/34080/28400
AL675276	450w/400w/380w	III	63900/56800/53960	AL675283	450w/400w/380w	IV	63900/56800/53960	AL675290	450w/400w/380w	V	63900/56800/53960

CCT	
Blank	5000K
57	5700K
4	4000K
3	3000K

Brackets	
S	Slipfitter
Q	Square Pole
A	Round & Square Pole
Y	Yoke Bracket

Options	
Blank	3 Pin Base and Photocell
PB	3 Pin Photobase
WP	No Base / no photocell
7B	7 Pin Base
S2	SPD 20KV
MS	Motion Sensor # HB01DMS
RC	Remote control # HB03R
R	Reducer x arm @ 35-45mm
4B	277-480V
BT	Bluetooth Sensor # HB03DMS-A

Housing	
Blank	Gray
B	Bronze
W	White

### Notes

- Lumens based on 5000K
- 5700K = 145 lwx
- 5000K = 142 lwx
- 4000K = 140 lwx
- 3000K = 137 lwx
- Lumen tolerance up to 5-7%
- EPA:
  - 100-150w = 1.3ft²
  - 200w-300w = 2.1ft²
  - 450w = 2.8ft²
- BUG:
  - 100w = B3-U0-G3
  - 150w = B3-U0-G3
  - 200w = B4-U0-G3
  - 240w = B4-U0-G4
  - 300w = B4-U0-G4
  - 450w = B5-U0-G5
- Driver Brand:
  - 100w-200w = Sosen
  - 300w = Becky
  - 240w = HBE
  - 450w = LiFud
- LED Chips: Lumileds® 2835
- Total # LED Chips
  - 100w: 132 pcs
  - 150w: 187 pcs
  - 200w: 264 pcs
  - 240w: 308 pcs
  - 300w: 374 pcs
  - 450w: 552 pcs
- 100-200w & 300w SP=L-N: 4KV
- L80 @ 100,000 hrs, 25°C
- Housing wall thickness: >2mm
- PC Lens thickness: >7.2mm
- Salt chamber test: 400 hours
- 3 Pin Photobase and Photocell are standard
- The cable is UL certified, SJOW, Black color (ø8±0.3MM), black/white/green wire core, wire 3×0.824MM2, 18AWG, 105°C, 300V
- Arm compartment: 40-60mm / 40mm screws = standard with reducer = 34-45mm
- Paint Color:
  - Gray = RAL7004
  - Bronze = RAL8019
  - White = RAL9010
- Fixture Pass:
  - IEC 60598-1 & IEC 60598-2-3
  - IK08 = IEC 62262
  - IP66 = IEC 60529
  - Vibration Test - 60068-2-6
  - Vibration Test GB/T 2423.10-2019
  - 3G = C136.31-2010
  - SPD = IEC 61643 11
  - Class type = Complies UL 1310 Standard / class 1 with grounded

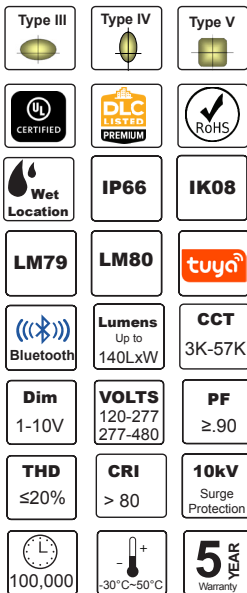
### Packing information

Model	Pieces per master	Box Dimensions (cm)	CBM (Master)	Gross Weight (KG)
100w/150w	1	54.5 x 40.5 x 18	0.0397	5.55
200w/240w/300w	1	63 x 40.5 x 18	0.0459	7.9
450w	1	91.5 x 40.5 x 17.3	0.0641	12.7

G.W. will vary per master when ordering mounting brackets

## Performer XS™

100w/150w/200w/240w/300w/450w



The Performer XS™ Series LED area/site luminaire introduces a new level of performance, versatility and value in a low-profile design that delivers significant installation and energy savings greater than 70%.

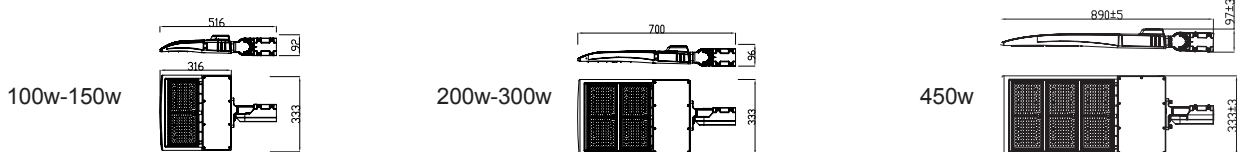
The Performer XS™ replaces 150-1000W metal halide fixtures in general area lighting applications. The Performer XP™ luminaire delivers an innovative thermal management design that maximizes heat dissipation resulting in longer fixture and LED life. Housing and cast parts are finished in polyester powder coat paint, for superior protection against fade and wear; the standard finish is bronze (white and gray color available). The UL 120-277V 1-10V dimming IP67 driver, with internal 6KV surge protection, (L-N:6KV, L-PE:6KV), is mounted to the fixture for optimal heat sinking and ease of maintenance. We have added an external 10KV SPD for maximum protection.

The precision molded high efficiency optics, with Lumileds® 2835 led chips, are designed to shape the distribution, maximizing efficiency and application spacing. Available in Type III, IV and V distributions with lumen packages ranging from 13,500 to 60,750 nominal lumens.

Time is money when it comes to installing and retrofitting area and site luminaires. The Performer XS™ was engineered to make installation quick and easy, saving on both installation time and costs. Optional round / square, yoke and slipfitter brackets are available for even more design flexibility for any building mount, street and roadway applications.

The Performer XS™ engineered optics provide uniform illumination to walkways, parking lots, roadways, building areas and security lighting applications. Able to replace HID fixtures the Performer XS™ is designed to meet the toughest lighting challenges.

### Dimensions (mm)



### Ordering information

Model	Power	Beam	Lumens
AL675250	100w	Type III	13,500
AL675251	150w	Type III	20,250
AL675252	200w	Type III	27,000
AL675253	240w	Type III	32,400
AL675254	300w	Type III	40,500
AL675267	450w	Type III	60,750
AL675255	100w	Type IV	13,500
AL675256	150w	Type IV	20,250
AL675257	200w	Type IV	27,000
AL675258	240w	Type IV	32,400
AL675259	300w	Type IV	40,500
AL675266	450w	Type IV	60,750

Model	Power	Beam	Lumens
AL675260	100w	Type V	13,500
AL675261	150w	Type V	20,250
AL675262	200w	Type V	27,000
AL675263	240w	Type V	32,400
AL675264	300w	Type V	40,500
AL675265	450w	Type V	60,750

CCT	Blank	57	4	3	Brackets
5000K	S1	Slipfitter 100-300w			
5700K	S2	Slipfitter 450w			
4000K	Q	Square Pole			
3000K	A	Round & Square Pole			
	Y	Yoke Bracket			

Options	Housing		
Blank	3 Pin Base and Photocell	Blank	Bronze
PB	3 Pin Photobase	G	Gray
WP	No Base / no photocell	W	White
7B	7 Pin Base		
S2	SPD 20KV		
MS	Motion Sensor # HB01DMS		
RC	Remote control # HB03R		
R	Reducer x arm @ 35-45mm		
48	277-480V		
BT	Bluetooth Sensor # HB03DMS-A		

### Notes

- Lumens based on 5000K
  - 5700K = 140 lxw
  - 5000K = 135 lxw
  - 4000K = 134 lxw
  - 3000K = 130 lxw
- Lumen tolerance up to 5-7%
- EPA:
  - 100-150w = 1.3ft<sup>2</sup>
  - 200w-300w = 2.1ft<sup>2</sup>
  - 450w = 2.8ft<sup>2</sup>
- BUG:
  - 100w = B3-U0-G3
  - 150w = B3-U0-G3
  - 200w = B4-U0-G3
  - 240w = B4-U0-G4
  - 300w = B4-U0-G4
  - 450w = B5-U5-G5
- Driver Brand:
  - 100w-200w = Sosen
  - 300w = Becky
  - 240w = HBE
  - 450 = LIFud
- LED Chips: Lumileds® 2835
  - Total # LED Chips
  - 100w: 132 pcs
  - 150w: 187 pcs
  - 200w: 264 pcs
  - 240w: 308 pcs
  - 300w: 374 pcs
  - 450w: 552 pcs
- 100-200w & 300w SP = L-N: 4KV
- L80 @ 100,000 hrs, 25°C
- Housing wall thickness: >2mm
- PC Lens thickness: >7.2mm
- Salt chamber test: 400 hours
- 3 Pin Photobase and Photocell are standard
- The cable is UL certified, SJOW, Black color (Φ8±0.3MM), black/white/green wire core, wire 3×0.824MM2, 18AWG, 105°C, 300V (Standard wire is 1.2m, outside 1m)
- Arm compartment:
  - 40-60mm / 40mm screws = standard with reducer = 34-45mm
- Paint Color:
  - Gray = RAL7004
  - Bronze = RAL8019
  - White = RAL9010
- Fixture Pass:
  - IEC 60598-1 & IEC 60598-2-3
  - IK08 = IEC 62262
  - IP66 = IEC 60529
  - Vibration Test - 60068-2-6
  - Vibration Test GB/T 2423.10-2019
  - 3G = C136.31-2010
  - SPD = IEC 61643 11
  - Class type = Complies UL 1310 Standard / class 1 with grounded

### Packing information

Model	Pieces per master	Box Dimensions (cm)	CBM (Master)	Gross Weight (KG)
100w/150w	1	54.5 x 40.5 x 18	0.0397	5.55
200w/240w/300w	1	63 x 40.5 x 18	0.0459	7.9
450w	1	91.5 x 40.5 x 17.3	0.0641	12.7

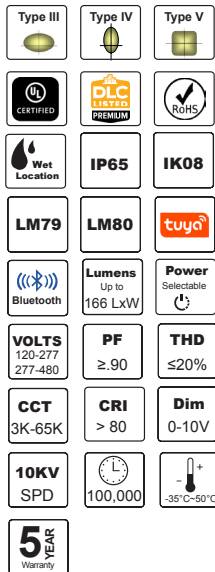
G.W. will vary per master when ordering mounting brackets



## Performer XE™

60w/100w/150w/200w/240w/300w

Single Power  
Power Selectable



The Performer XE™ Series LED area-site-roadway luminaire introduces a new level of performance, versatility and value in a low-profile design that delivers significant installation and energy savings greater than 70%. The Performer XE™ replaces 150-1500W metal halide fixtures in general area and roadway lighting applications.

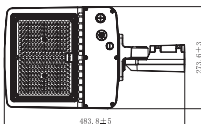
Time is money when it comes to installing and retrofitting area and site luminaires. The Performer XE™ was engineered to make installation quick and easy; saving on both installation time and costs. The Performer XE™ luminaire delivers an innovative thermal management design that maximizes heat dissipation resulting in longer fixture and LED life. Housing and cast parts are finished in polyester powder coat paint, for superior protection against fade and wear; the standard finish is bronze (white and gray color available).

Performer XE™ high efficiency molded optics, with Lumileds® 2835 led chips, are designed to shape the distribution, maximizing efficiency and application spacing, available in Type III, IV and V distributions with lumen packages ranging from 8,700 to 43,500 nominal lumens. The UL 120-277V 0-10V dimming IP67 driver, with internal 6KV surge protection, (L-N-6kV, L-PE:6kV), is mounted to the fixture for optimal heat sinking and ease of maintenance. We have added an external 10KV SPD for maximum protection. Optional round, square & yoke brackets, motion sensor & 20KV SPD are available for even more design flexibility for any building mount, street and roadway applications.

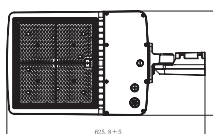
The Performer XE™ engineered optics provide uniform illumination to walkways, parking lots, roadways, building areas and security lighting applications. Able to replace HID fixtures the Performer XE™ is designed to meet the toughest lighting challenges.

### Dimensions (mm)

60w-200w



240w-300w



### Ordering information

#### Single Power

Model	Power	Beam	Lumens
AL675358	60w	Type III	9,960
AL675360	100w	Type III	14,500
AL675361	150w	Type III	21,750
AL675362	200w	Type III	29,000
AL675363	240w	Type III	34,800
AL675364	300w	Type III	43,500

Model	Power	Beam	Lumens
AL675359	60w	Type IV	9,960
AL675365	100w	Type IV	14,500
AL675366	150w	Type IV	21,750
AL675367	200w	Type IV	29,000
AL675368	240w	Type IV	34,800
AL675369	300w	Type IV	43,500

Model	Power	Beam	Lumens
AL675370	240w	Type V	34,800
AL675371	300w	Type V	43,500

#### Power Selectable

Model	Power	Beam	Lumens
AL675372	100w/80w/60w	Type III	14,500/11,600/9,960
AL675373	150w/130w/100w	Type III	21,750/18,850/14,500
AL675374	200w/180w/150w	Type III	29,000/26,100/21,750
AL675375	240w/200w/180w	Type III	34,800/29,000/26,100
AL675376	300w/240w/200w	Type III	43,500/34,800/29,000

Model	Power	Beam	Lumens
AL675377	100w/80w/60w	Type IV	14,500/11,600/9,960
AL675378	150w/130w/100w	Type IV	21,750/18,850/14,500
AL675379	200w/180w/150w	Type IV	29,000/26,100/21,750
AL675380	240w/200w/180w	Type IV	34,800/29,000/26,100
AL675381	300w/240w/200w	Type IV	43,500/34,800/29,000

Model	Power	Beam	Lumens
AL675382	240w/200w/180w	Type V	39,840/29,000/26,100
AL675383	300w/240w/200w	Type V	43,500/34,800/29,000

#### CCT

Blank	5000K
6	6500K
7	5700K
4	4000K
3	3000K

#### Brackets

S	Slipfitter
Q	Square Pole
A	Round & Square Pole
Y	Yoke Bracket

#### Options

Blank	3 Pin Base and Photocell
PB	3 Pin Photobase
WP	No Base / no photocell
7B	7 Pin Base
S2	SPD 20KV
MS	Microwave Sensor # HB01DMS-A
RC	Remote control # HB03R
R	Reducer x arm @ 35-45mm
LS	Light Shield
48	277-480V
BT	Bluetooth MW Sensor # HB03DMS-A

#### Housing

Blank	Bronze
G	Gray
W	White

### Notes

- Lumens based on 5000K  
3K= 135 lww  
4K/5K/57K/65K = 145 lww  
6500K = No DLC
- 60w:  
3000K-3500K = 156 lww  
4000K-6500K = 166 lww
- Lumen tolerance up to 10%
- Driver Brand:  
120V-277V = HBE non-isolated driver  
277V-480V = Fahold non-isolated driver
- EPA:  
60w-200w = 1ft<sup>2</sup>  
240w-300w = 1.8<sup>2</sup>
- 100K hours -Case Temperature <75°C
- 3 Pin Photobase and Photocell are standard
- Housing wall thickness: >1.5mm
- PC Lens thickness: 8mm
- LED Chips: Lumileds® 2835  
Total # LED Chips=  
60w / 100w: 162 pcs  
150w: 212 pcs  
200w: 265pcs  
240w: 318 pcs  
300w: 424 pcs
- BUG:  
60w = B3-U0-G3  
100w = B3-U3-G3  
150w = B4-U3-G2  
200w-300w = B4-U3-G4
- Cable:  
120-277V = UL certified, SJOW, Black color (Ø8±0.3MM), black/white/green wire core, wire 3×0.824MM2, 18AWG, 105°C, 300V (Standard wire is 1.2m, outside 1m)
- Salt chamber test: 168 hours
- LED Modules:  
1 = (60w-200w)  
2 = (240w-300w)
- Arm compartment:  
40-60mm / 40mm screws = standard with reducer = 34-45mm
- Paint Color:  
Bronze = RAL8019  
Gray = RAL7004  
White = RAL9010
- SPD Part #:  
10KV = ZYS-P10A  
20KV = ZYS-P20A
- Fixture Pass:  
IP07 = IEC 62262  
IP65 = IEC 60529  
SPD = IEC 61643 11  
Class type = Complies UL class 1 with grounded Salt Spray Test: IEC60068-2-11:2021, ISO9227:2022

### Packing information

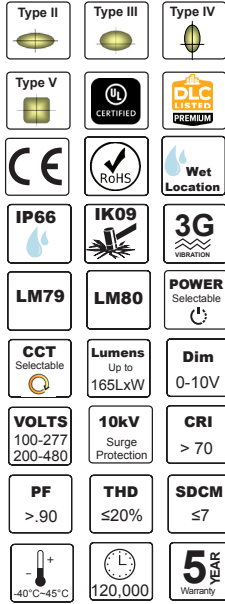
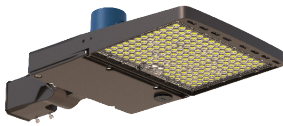
Model	Pieces per master	Box Dimensions (cm)	CBM (Master)	Gross Weight (KG)
60w-200w	1	56.5 x 33 x 15.8	0.0294	4.5
240w-300w	1	71 x 38.5 x 15.3	0.0418	6.1

G.W. will vary per master when ordering mounting brackets

## Performer X5™

100w/150w/200w  
240w/300w/400w/500w

Power & CCT Selectable



Performer X5™ Series is designed to deliver high-performance illumination with enhanced flexibility and simplified project adaptability for roadway, area, and parking lighting applications. Featuring advanced power and CCT selectable technology, the luminaire offers up to four power configurations within a single fixture, enabling precise adjustment of light output while reducing inventory complexity and installation costs.

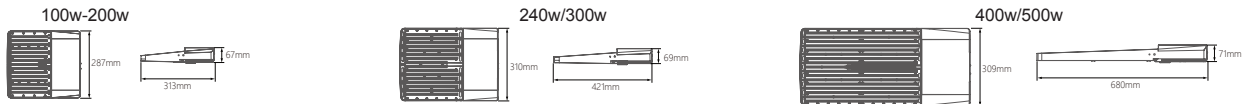
With system efficacy up to 165 lm/W, the Performer X5™ provides efficient energy performance, uniform light distribution, and optimized spacing across a wide range of applications. Multiple optical distributions ensure reliable photometric performance for streets, parking areas, and general site lighting. A robust thermal management system maintains stable operating temperatures, supporting long-term LED performance with a projected service life of up to 120,000 hours, reducing maintenance requirements over time.

The luminaire features a durable die-cast aluminum housing, rated IP66 and IK09, ensuring reliable operation in harsh outdoor environments. A high-quality polyester powder coating provides additional protection against corrosion, UV exposure, and environmental wear. The electrical system includes a high-performance LED driver with input voltage options of 100–277V or 200–480V, power factor >0.90, and total harmonic distortion ≤20%, ensuring stable operation across varying grid conditions. Standard 0–10V dimming is included, along with an integrated 10kV Surge Protection Device (SPD) to enhance protection against voltage transients and improve system reliability. The fixture is also equipped with an integrated pressure equalization vent (breather) to balance internal air pressure, minimize condensation, and maintain long-term sealing performance.

Designed for installation versatility, the Performer X5™ incorporates a universal 4-in-1 mounting system for slipfitter, round pole, and wall mount configurations. Optional accessories such as photocell and motion sensors further increase adaptability for different project requirements.

The Performer X5™ Series combines performance, flexibility, and durability in a streamlined design, making it a reliable and efficient solution for modern lighting infrastructure.

### Dimensions (mm)



### Ordering information

#### 3K/4K/5K

Item	Power Select	Dist Type	Lumens
AL675600	100w/80w/65w/50w	II	16000/12800/10400/8000
AL675601	150w/120w/100w/80w	II	24000/19200/16000/12800
AL675602	200w/150w/120w/100w	II	32000/24000/19200/16000
AL675603	240w/200w/150w/120w	II	38400/35000/24000/19200
AL675604	300w/240w/200w/150w	II	48000/38400/32000/24000
AL675605	400w/300w/240w/200w	II	64000/48000/38400/32000
AL675606	500w/400w/300w/240w	II	80000/64000/48000/38400

Item	Power Select	Dist Type	Lumens
AL675607	100w/80w/65w/50w	III	16000/12800/10400/8000
AL675608	150w/120w/100w/80w	III	24000/19200/16000/12800
AL675609	200w/150w/120w/100w	III	32000/24000/19200/16000
AL675610	240w/200w/150w/120w	III	38400/35000/24000/19200
AL675611	300w/240w/200w/150w	III	48000/38400/32000/24000
AL675612	400w/300w/240w/200w	III	64000/48000/38400/32000
AL675613	500w/400w/300w/240w	III	80000/64000/48000/38400

#### 4K/5K/57K

Item	Power Select	Beam	Lumens
AL675628	100w/80w/65w/50w	II	16000/12800/10400/8000
AL675629	150w/120w/100w/80w	II	24000/19200/16000/12800
AL675630	200w/150w/120w/100w	II	32000/24000/19200/16000
AL675631	240w/200w/150w/120w	II	38400/35000/24000/19200
AL675632	300w/240w/200w/150w	II	48000/38400/32000/24000
AL675633	400w/300w/240w/200w	II	64000/48000/38400/32000
AL675634	500w/400w/300w/240w	II	80000/64000/48000/38400

Item	Power Select	Beam	Lumens
AL675635	100w/80w/65w/50w	III	16000/12800/10400/8000
AL675636	150w/120w/100w/80w	III	24000/19200/16000/12800
AL675637	200w/150w/120w/100w	III	32000/24000/19200/16000
AL675638	240w/200w/150w/120w	III	38400/35000/24000/19200
AL675639	300w/240w/200w/150w	III	48000/38400/32000/24000
AL675640	400w/300w/240w/200w	III	64000/48000/38400/32000
AL675641	500w/400w/300w/240w	III	80000/64000/48000/38400

Item	Power Select	Dist Type	Lumens
AL675614	100w/80w/65w/50w	IV	16000/12800/10400/8000
AL675615	150w/120w/100w/80w	IV	24000/19200/16000/12800
AL675616	200w/150w/120w/100w	IV	32000/24000/19200/16000
AL675617	240w/200w/150w/120w	IV	38400/35000/24000/19200
AL675618	300w/240w/200w/150w	IV	48000/38400/32000/24000
AL675619	400w/300w/240w/200w	IV	64000/48000/38400/32000
AL675620	500w/400w/300w/240w	IV	80000/64000/48000/38400

Item	Power Select	Dist Type	Lumens
AL675621	100w/80w/65w/50w	V	16000/12800/10400/8000
AL675622	150w/120w/100w/80w	V	24000/19200/16000/12800
AL675623	200w/150w/120w/100w	V	32000/24000/19200/16000
AL675624	240w/200w/150w/120w	V	38400/35000/24000/19200
AL675625	300w/240w/200w/150w	V	48000/38400/32000/24000
AL675626	400w/300w/240w/200w	V	64000/48000/38400/32000
AL675627	500w/400w/300w/240w	V	80000/64000/48000/38400

Item	Power Select	Beam	Lumens
AL675642	100w/80w/65w/50w	IV	16000/12800/10400/8000
AL675643	150w/120w/100w/80w	IV	24000/19200/16000/12800
AL675644	200w/150w/120w/100w	IV	32000/24000/19200/16000
AL675645	240w/200w/150w/120w	IV	38400/35000/24000/19200
AL675646	300w/240w/200w/150w	IV	48000/38400/32000/24000
AL675647	400w/300w/240w/200w	IV	64000/48000/38400/32000
AL675648	500w/400w/300w/240w	IV	80000/64000/48000/38400

Item	Power Select	Beam	Lumens
AL675649	100w/80w/65w/50w	V	16000/12800/10400/8000
AL675650	150w/120w/100w/80w	V	24000/19200/16000/12800
AL675651	200w/150w/120w/100w	V	32000/24000/19200/16000
AL675652	240w/200w/150w/120w	V	38400/35000/24000/19200
AL675653	300w/240w/200w/150w	V	48000/38400/32000/24000
AL675654	400w/300w/240w/200w	V	64000/48000/38400/32000
AL675655	500w/400w/300w/240w	V	80000/64000/48000/38400

#### Brackets

- S Slipfitter
- U Universal
- A Round & Sq Pole

#### Options

- Blank 3P Base and Photocell
- PB 3P Photobase
- WP No Base / no photocell
- 7B 7 Pin Base
- P Internal photocell
- S2 20kV SPD
- MS Motion Sensor
- RC Remote Control
- 4B 200-480V

#### Housing

- Blank Bronze
- B Black

### Notes

- Power & CCT Selectable 3K/4K/5K: Lumens based on 4000K
- LED Chips: Lumileds® 2835R
- Total # LED Chips
- 4000K = 145 lws
- 4000K = 165 lws
- 3000K = 145 lws
- Power & CCT Selectable 4K/5K/57K: Lumens based on 5000K
- 4000K = 150 lws
- 5000K = 165 lws
- 5700K = 150 lws
- Lumen tolerance up to 10%
- Housing wall thickness: >2mm
- PC Lens thickness: >2mm
- Paint Color: Bronze = RAL7022
- Black = RAL9017
- Cable: 120-277V = UL certified, S.J.W, Black color (Ø7.8±0.2MM), black/white/green wire core, wire 3x18AWG (0.824 MM2), 105°C, 300V (Standard wire is 0.7-0.8mm, outside 0.5m)
- Dimming Cable: 20-277V = UL certified, S.J.W, Black color (Ø7.4±0.2MM), Purple/Pink wire core, wire 3x0.82418AWG(0.824 MM2) 105°C, 300V (Standard wire is 0.5-0.6mm, outside 0.3m)
- Driver Brand: 100-277V = Sosen
- 200-480V = Done
- Surge protection: CM: 6kV, DM: 6kV
- Driver class = P
- Class types: Complies ILL 1310 Standard / class with grounded
- MTBF: 200,000 Hours
- 120k hours -Case Temp. <-65°C
- Motion Sensor: Brand = Sharkward Part # BR1820
- Remote Control = Part # RC-100
- Internal Photocell Brand = Lifud
- Arm compartment: 40-80mm
- Universal Mount: 4 in 1 Slipfitter, Square Pole, Round Pole Wall Mount
- EPA: 100w-200w = 1.13 ft²
- 240w/300w = 1.64 ft²
- 400w/500w = 2.68 ft²
- Fixture Complies: UL 1598
- IEC 60598-1
- IEC 60598-2-3
- IEC 62031
- IEC 62321-3-1
- IEC TR 62778
- IP66 = IEC 60529
- IK09 = IEC 62262:2002+AMD1:2021
- Salt chamber: 500 hours
- Vibration = ANSI C136.31 2018
- SPD = UL1449 and IEEE62.41.2 C

### Packing information

Model	Pieces per master	Box Dimensions (cm)	CBM (Master)	Gross Weight (KG)
100w-200w	1	37 x 34 x 12	0.0150	3.1
240w/300w	1	48 x 36 x 12	0.0207	3.7
400w/500w	1	73.5 x 39 x 12.5	0.0358	6.8

G.W. will vary per master when ordering mounting brackets



## Warranty

Americanlite® is pleased to provide a 5, 6 or 7 year limited warranty covering the LED fixtures on this catalogue. Americanlite® warrants that the LED fixtures comply with Americanlite®'s published specifications and are free from defects in materials and workmanship.

All our equipment is CE, ETL or UL approved and manufactured with approved components. Americanlite® reserves the right to change or improve the design or components of any of its products due to parts availability or changes in standards, without assuming any obligation to modify any product previously manufactured and without notice. All equipment is tested and inspected before shipment.

This warranty is void if the product is operated outside of its normal operating conditions. The foregoing warranty does not apply to failures caused by acts of God or as a result of any abuse, misuse, abnormal use, or use in violation of any applicable standard, code or instructions for use in installations, including, but not limited to, those contained in the Standards for the International Electrotechnical Commission. Americanlite® reserves and has the right to examine failed fixtures to determine the cause of failure, excessive lumen depreciation and patterns of usage.