



UL Backlite™ Panel

americanlite®

We light your world™





Backlite™ Series

DLC 5.1 Premium

30w / 40w / 50w

	Lumens 130LXW	DIM 0-10V
CCT 3-65K	CRI 80	 120° Beam Angle
SDCM <4	UGR ≤22	1kV Surge Protector
VOLTS 120-277	PF >.90	THD <15%
 -20°~+40°C	 60,000	6 YEAR Warranty

Americanlite® UL Backlite™ LED Panels provides quality performance and pleasing aesthetics. Developed with the latest generation of solid-state components and electronic driver technologies, these panels are ideal for both new construction and renovation of existing fluorescent fixtures.

Narrow aluminum frame is tightly held to cold steel back plate to protect the LEDs and optical area. Corners are seamless with a narrow angle to provide a refined finish and maximize the light emitting surface.

White frosted lens with smooth pattern provides uniform illumination as well as scratch and impact resistance. The Lens is constructed of PS with specialized features to optimize light extraction providing excellent efficiency. Long-Life LED system (LED PCB) coupled with UL electronic driver with 1KV surge protection, to deliver optimal performance. CCT, from 3000K up to 6500K with a minimum of CRI 80 and 60,000 hours.

Americanlite® UL Backlite™ LED Panels are optimized for shallow plenum grid ceilings but may also be surface, suspended mounted using the optional kits.

Americanlite® UL Backlite™ LED Panels are an excellent lighting solution for commercial office spaces, schools, healthcare facilities and retail merchandising areas.

Ordering information

Item	Power	Size (mm)	CCT	Lumens	Options	Accessories
AL674925	30w	603x603x33	3000K	3900	E1 ER 4w AL585005 E2 ER 8w AL585008	Hanging kit (iron wire 1m) AL674900 2 x 2 AL674901 1 x 4 & 2 x 4
AL674926	30w	603x603x33	4000K	3900		
AL674927	30w	603x603x33	5000K	3900		
AL674928	30w	603x603x33	6500K	3900		
AL674929	40w	603x603x33	3000K	5200		Frame for Surface mount AL674902 2 x 2 AL674903 1 x 4 AL674904 2 x 4
AL674930	40w	603x603x33	4000K	5200		
AL674931	40w	603x603x33	5000K	5200		
AL674932	40w	603x603x33	6500K	5200		
AL674933	40w	303x1213x33	3000K	5200		Drywall Recessed Cips kit AL674921 2 x 2 AL674922 1 x 4 / 2 x 4
AL674934	40w	303x1213x33	4000K	5200		
AL674935	40w	303x1213x33	5000K	5200		
AL674936	40w	303x1213x33	6500K	5200		
AL674937	50w	603x1213x33	3000K	6500		
AL674938	50w	603x1213x33	4000K	6500		
AL674939	50w	603x1213x33	5000K	6500		
AL674940	50w	603x1213x33	6500K	6500		

Notes

- Lumen tolerance +- 5%
- Height 31.5mm / 33mm including driver
- Output Voltage 36-43VDC
- Complies with DLC
- Recommended use per day 24/7 in ambient temp of 25°C. In temps >25° may result in shorter lifetime of the product
- ANSI C82.77 Surge Protection
- Flicker <30%

Packing information

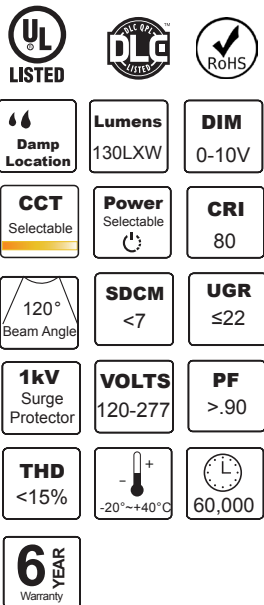
Model	Pieces per master	Box Dimensions (cm)	CBM (Master)	Gross Weight (KG)
2x2	4	66 x 15 x 67	0.0663	10
1x4	4	127 x 15 x 37	0.0704	10.5
2x4	4	127 x 15 x 67	0.1276	18.5

Model	Pieces per master	Box Dimensions (cm)	CBM (Master)	Gross Weight (KG)
2x2 Frame	20	66 x 30 x 17	0.0336	12.3
1x4 Frame	20	124 x 30 x 17	0.0632	13
2x4 Frame	15	124 x 23 x 17	0.0484	14.3



Backlite™ Series

DLC 5.1 Standard
CCT & Power Selectable



Americanlite® UL Backlite™ LED Panels with Selectable Lite™ provides the ability to change the CCT and the power with the flip of a switch and cater to the needs of a space. Too warm or too cool? too bright? Simply toggle the integrated switch to your desired setting and you are done!

Americanlite® UL Backlite™ LED Panels are developed with the latest generation of solid-state components and electronic driver technologies, Narrow aluminum frame is tightly held to cold steel back plate to protect the LEDs and optical area. Corners are seamless with a narrow angle to provide a refined finish and maximize the light emitting surface.

White frosted lens with smooth pattern provides uniform illumination as well as scratch and impact resistance. The Lens is constructed of PS with specialized features to optimize light extraction providing excellent efficiency. Long-Life LED system (LED PCB) coupled with UL electronic driver with 1KV surge protection, to deliver optimal performance. Selectable Power 20w/25w/30w, 20w/30w/40w, 30w/35w/40w or 30w/40w/50w and Selectable CCT, from 3500K up to 6500K with a minimum of CRI 80 and 60,000 hours.

Americanlite® UL Backlite™ LED Panels are optimized for shallow plenum grid ceilings but may also be surface, suspended mounted using the optional kits.

Americanlite® UL Backlite™ LED Panels are an excellent lighting solution for commercial office spaces, schools, healthcare facilities and retail merchandising areas.

Ordering information

Item	Selectable Power	Size (mm)	Selectable CCT	Lumens	Options	Accessories
AL674941	20w/25w/30w	603x603x33	35K/4K/5K	2600/3250/3900	E1 ER 4w AL585005	Hanging kit (iron wire 1m) AL674900 2 x 2 AL674901 1 x 4 & 2 x 4
AL674942	20w/25w/30w	603x603x33	3K/4K/6K	2600/3250/3900	E2 ER 8w AL585008	
AL674981	20w/25w/30w	603x603x33	4K/5K/65K	2600/3250/3900		
AL674973	20w/30w/40w	603x603x33	35K/4K/5K	2600/3900/5200		Frame for Surface mount AL674902 2 x 2 AL674903 1 x 4 AL674904 2 x 4
AL674974	20w/30w/40w	603x603x33	3K/4K/6K	2600/3900/5200		
AL674982	20w/30w/40w	603x603x33	4K/5K/65K	2600/3900/5200		
AL674943	20w/25w/30w	303x1213x33	35K/4K/5K	2600/3250/3900		
AL674944	20w/25w/30w	303x1213x33	3K/4K/6K	2600/3250/3900		
AL674983	20w/25w/30w	303x1213x33	4K/5K/65K	2600/3250/3900		
AL674985	20w/30w/40w	303x1213x33	35K/4K/5K	2600/3900/5200		
AL674986	20w/30w/40w	303x1213x33	3K/4K/6K	2600/3900/5200		
AL674987	20w/30w/40w	303x1213x33	4K/5K/65K	2600/3900/5200		
AL674945	30w/35w/40w	603x1213x33	35K/4K/5K	3900/4550/5200		Drywall Recessed Cips kit AL674921 2 x 2 AL674922 1 x 4 / 2 x 4
AL674946	30w/35w/40w	603x1213x33	3K/4K/6K	3900/4550/5200		
AL674984	30w/35w/40w	603x1213x33	4K/5K/65K	3900/4550/5200		
AL674975	30w/40w/50w	603x1213x33	35K/4K/5K	3900/5200/6500		
AL674976	30w/40w/50w	603x1213x33	3K/4K/6K	3900/5200/6500		
AL674977	30w/40w/50w	603x1213x33	4K/5K/65K	3900/5200/6500		
Item	Single Power	Size (mm)	Selectable CCT	Lumens		
AL674971	50w	603x1213x33	35K/4K/5K	6500/6500/6500		
AL674972	50w	603x1213x33	4K/5K/65K	6500/6500/6500		

Notes

- Lumen tolerance +- 5%
- Height 31.5mm / 33mm including driver
- For Selectable Power lumens based on hightest wattage
- Output Voltage 36-43VDC
- Complies with DLC
- Recommended use per day 24/7 in ambient temp of 25°C. In temps >25° may result in shorter lifetime of the product
- ANSI C82.77 Surge Protection
- Flicker <30%

Packing information

Model	Pieces per master	Box Dimensions (cm)	CBM (Master)	Gross Weight (KG)
2x2	4	66 x 15 x 67	0.0663	10
1x4	4	127 x 15 x 37	0.0704	10.5
2x4	4	127 x 15 x 67	0.1276	18.5

Model	Pieces per master	Box Dimensions (cm)	CBM (Master)	Gross Weight (KG)
2x2 Frame	20	66 x 30 x 17	0.0336	12.3
1x4 Frame	20	124 x 30 x 17	0.0632	13
2x4 Frame	15	124 x 23 x 17	0.0484	14.3

Backlite™ Series

CCT & Power Selectable



	Lumens up to 135LXW	
CCT Selectable 35K/4K/5K 4K/5K/65K	Power Selectable	CRI ≥ 80
	SDCM <6	UGR <25
1kV Surge Protector	VOLTS 120-277	PF >.90
THD <20%		
5 YEAR Warranty		

Americanlite® ETL Backlite™ LED Panels with Selectable Lite™ provides the ability to change the CCT and the power with the flip of a switch and cater to the needs of a space. Too warm or too cool? too bright? Simply toggle the integrated switch to your desired setting and you are done!

Americanlite® ETL Backlite™ LED Panels are developed with the latest generation of solid-state components and electronic driver technologies, Narrow aluminum frame is tightly held to cold steel back plate to protect the LEDs and optical area. Corners are seamless with a narrow angle to provide a refined finish and maximize the light emitting surface.

White frosted lens with smooth pattern provides uniform illumination as well as scratch and impact resistance. The Lens is constructed of PS with specialized features to optimize light extraction providing excellent efficiency. Long-Life LED system (LED PCB) coupled with electronic driver with 1KV surge protection, to deliver optimal performance. Selectable Power combinations and Selectable CCT, from 3500K up to 6500K with a minimum of CRI 80 and 65,000 hours.

Americanlite® ETL Backlite™ LED Panels are optimized for shallow plenum grid ceilings but may also be surface, or suspended mounted using the optional kits.

Americanlite® ETL Backlite™ LED Panels are an excellent lighting solution for commercial office spaces, schools, healthcare facilities and retail merchandising areas.

Ordering information

Item	Selectable Power	Size (mm)	Selectable CCT	Lumens	Options	Accessories
AL694900	26w/30w/40w	603x603x38	35K/4K/5K	5000/5400/5200	ER 8w ER Battery	Hanging kit
AL694901	26w/30w/40w	603x603x38	4K/5K/65K	5000/5400/5200		AL694910 2 x 2
AL694902	26w/30w/40w	302x1211x38	35K/4K/5K	5000/5400/5200		AL694911 1 x 4
AL694903	26w/30w/40w	302x1211x38	4K/5K/65K	5000/5400/5200		AL694912 2 x 4
AL694904	30w/40w/50w	603x1211x38	35K/4K/5K	6250/6750/6500		Surface mount frame
AL694905	30w/40w/50w	603x1211x38	4K/5K/65K	6250/6750/6500		AL694913 2 x 2
AL694906	40w/52w/65w	603x1211x38	35K/4K/5K	8125/8775/8450		AL694914 1 x 2
AL694907	40w/52w/65w	603x1211x38	4K/5K/65K	8125/8775/8450		AL694915 2 x 4
AL694908	50w/60w/72w	603x1211x38	35K/4K/5K	9000/10125/9360		
AL694909	50w/60w/72w	603x1211x38	4K/5K/65K	9000/10125/9360		

Notes

- Lumens declared based on highest wattage
- Lumen tolerance up to 10%
- 35K/4K/5K Lumens Based on 4000K
- 4K/5K/65K Lumens Based on 5000K
- 3500K= up to 125 lxw
- 4000K= up to 135 lxw
- 5000K= up to 130 lxw
- 4000K= up to 125 lxw
- 5000K= up to 135 lxw
- 6500K= up to 130 lxw
- Height 38 including driver
- 4K/5K/65K = NO DLC
- ER #BLD-YT08E-056
- Hanging kit = stainless steel wire 1.5m

Packing information

Model	Pices per inner box	Pieces per master	Carton Dimensions (cm)	CBM (Master)	Gross Weight (KG)
2x2	2	4	67 x 67 x 24	0.1077	15.3
1x4	2	4	127 x 37.5 x 24	0.1143	15.5
2x4	2	4	127 x 67.5 x 24	0.2057	30.5



Backlite™ Series

30w / 40w / 50w



Lumens
100LXW

DIM
0-10V

CCT
3-65K

CRI
80



SDCM
<5

UGR
≤22

1kV
Surge Protector

VOLTS
120-277

PF
>.90

THD
<15%



60,000

6 YEAR
Warranty

Americanlite® UL Backlite™ LED Panels provides quality performance and pleasing aesthetics. Developed with the latest generation of solid-state components and electronic driver technologies, these panels are ideal for both new construction and renovation of existing fluorescent fixtures.

Narrow aluminum frame is tightly held to cold steel back plate to protect the LEDs and optical area. Corners are seamless with a narrow angle to provide a refined finish and maximize the light emitting surface.

White frosted lens with smooth pattern provides uniform illumination as well as scratch and impact resistance. The Lens is constructed of PS with specialized features to optimize light extraction providing excellent efficiency. Long-Life LED system (LED PCB) coupled with UL electronic driver with 1KV surge protection, to deliver optimal performance. CCT from 3000K up to 6500K with a minimum of CRI 80 and 60,000 hours.

Americanlite® UL Backlite™ LED Panels are optimized for shallow plenum grid ceilings but may also be surface, suspended mounted using the optional kits.

Americanlite® UL Backlite™ LED Panels are an excellent lighting solution for commercial office spaces, schools, healthcare facilities and retail merchandising areas.

Ordering information

Item	Power	Size (mm)	CCT	Lumens	Options	Accessories
AL674905	30w	603x603x33	3000K	3000	E1 ER 4w AL585005 E2 ER 8w AL585008	Hanging kit (iron wire 1m) AL674900 2 x 2 AL674901 1 x 4 & 2 x 4
AL674906	30w	603x603x33	4000K	3000		
AL674907	30w	603x603x33	5000K	3000		
AL674908	30w	603x603x33	6500K	3000		
AL674909	40w	603x603x33	3000K	4000		Frame for Surface mount AL674902 2 x 2 AL674903 1 x 4 AL674904 2 x 4
AL674910	40w	603x603x33	4000K	4000		
AL674911	40w	603x603x33	5000K	4000		
AL674912	40w	603x603x33	6500K	4000		
AL674913	40w	303x1213x33	3000K	4000		Drywall Recessed Cips kit AL674921 2 x 2 AL674922 1 x 4 / 2 x 4
AL674914	40w	303x1213x33	4000K	4000		
AL674915	40w	303x1213x33	5000K	4000		
AL674916	40w	303x1213x33	6500K	4000		
AL674917	50w	603x1213x33	3000K	5000		
AL674918	50w	603x1213x33	4000K	5000		
AL674919	50w	603x1213x33	5000K	5000		
AL674920	50w	603x1213x33	6500K	5000		

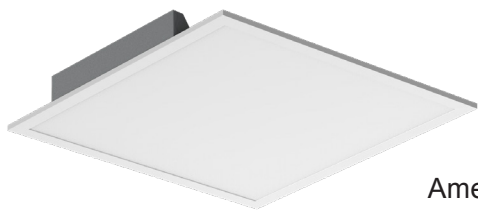
Notes

- Lumen tolerance +/- 5%
- Height 31.5mm / 33mm including driver
- Output Voltage 36-43VDC
- Recommended use per day 24/7 in ambient temp of 25°C. In temps >25° may result in shorter lifetime of the product
- ANSI C82.77 Surge Protection
- Flicker <30%

Packing information

Model	Pieces per master	Box Dimensions (cm)	CBM (Master)	Gross Weight (KG)
2x2	4	66 x 15 x 67	0.0663	10
1x4	4	127 x 15 x 37	0.0704	10.5
2x4	4	127 x 15 x 67	0.1276	18.5

Model	Pieces per master	Box Dimensions (cm)	CBM (Master)	Gross Weight (KG)
2x2 Frame	20	66 x 30 x 17	0.0336	12.3
1x4 Frame	20	124 x 30 x 17	0.0632	13
2x4 Frame	15	124 x 23 x 17	0.0484	14.3



Backlite™ Series

CCT & Power Selectable



Damp Location	Lumens 100LXW	DIM 0-10V
CCT Selectable	Power Selectable	CRI 80
120° Beam Angle	SDCM <5	UGR ≤22
1kV Surge Protector	VOLTS 120-277	PF >.90
THD <15%	Temperature -20°~+40°C	Lifespan 60,000
6 YEAR Warranty		

Americanlite® UL Backlite™ LED Panels with Selectable Lite™ provides the ability to change the CCT and the power with the flip of a switch and cater to the needs of a space. Too warm or too cool? too bright? Simply toggle the integrated switch to your desired setting and you are done!

Americanlite® UL Backlite™ LED Panels are developed with the latest generation of solid- state components and electronic driver technologies, Narrow aluminum frame is tightly held to cold steel back plate to protect the LEDs and optical area. Corners are seamless with a narrow angle to provide a refined finish and maximize the light emitting surface.

White frosted lens with smooth pattern provides uniform illumination as well as scratch and impact resistance. The Lens is constructed of PS with specialized features to optimize light extraction providing excellent efficiency. Long-Life LED system (LED PCB) coupled with UL electronic driver with 1KV surge protection, to deliver optimal performance. Selectable Power 20w/25w/30w or 30w/35w/40w and Selectable CCT, from 3500K up to 6500K with a minimum of CRI 80 and 60,000 hours. Also available in Single Power 50w.

Americanlite® UL Backlite™ LED Panels are optimized for shallow plenum grid ceilings but may also be surface, suspended mounted using the optional kits.

Americanlite® UL Backlite™ LED Panels are an excellent lighting solution for commercial office spaces, schools, healthcare facilities and retail merchandising areas.

Ordering information

Item	Selectable		Selectable		Options	Accessories
	Power	Size (mm)	CCT	Lumens		
AL674947	20w/30w/40w	603x603x33	35K/4K/5K	2000/3000/4000	E1 ER 4w AL585005 E2 ER 8w AL585008	Hanging kit (iron wire 1m) AL674900 2 x 2 AL674901 1 x 4 & 2 x 4 Frame for Surface mount AL674902 2 x 2 AL674903 1 x 4 AL674904 2 x 4 Drywall Recessed Cips kit AL674921 2 x 2 AL674922 1 x 4 / 2 x 4
AL674948	20w/30w/40w	603x603x33	3K/4K/6K	2000/3000/4000		
AL674953	20w/30w/40w	603x603x33	4K/5K/65K	2000/3000/4000		
AL674949	20w/30w/40w	303x1213x33	35K/4K/5K	2000/3000/4000		
AL674950	20w/30w/40w	303x1213x33	3K/4K/6K	2000/3000/4000		
AL674954	20w/30w/40w	303x1213x33	4K/5K/65K	2000/3000/4000		
AL674951	30w/40w/50w	603x1213x33	35K/4K/5K	3000/4000/5000		
AL674952	30w/40w/50w	603x1213x33	3K/4K/6K	3000/4000/5000		
AL674955	30w/40w/50w	603x1213x33	4K/5K/65K	3000/4000/5000		
Item	Single Power	Size (mm)	Selectable CCT	Lumens		
AL674980	40w	603x603x33	4K/5K/65K	4000/4000/4000		
AL674970	50w	603x1213x33	35K/4K/5K	5000/5000/5000		
AL674978	50w	603x1213x33	3K/4K/6K	5000/5000/5000		
AL674979	50w	603x1213x33	4K/5K/65K	5000/5000/5000		

Notes

- Lumen tolerance +/- 5%
- Height 31.5mm / 33mm including driver
- For Selectable Power lumens based on highest wattage
- Output Voltage 36-43VDC
- Recommended use per day 24/7 in ambient temp of 25°C. In temps >25° may result in shorter lifetime of the product
- ANSI C82.77 Surge Protection
- Flicker <30%

Packing information

Model	Pieces per master	Box Dimensions (cm)	CBM (Master)	Gross Weight (KG)
2x2	4	66 x 15 x 67	0.0663	10
1x4	4	127 x 15 x 37	0.0704	10.5
2x4	4	127 x 15 x 67	0.1276	18.5

Model	Pieces per master	Box Dimensions (cm)	CBM (Master)	Gross Weight (KG)
2x2 Frame	20	66 x 30 x 17	0.0336	12.3
1x4 Frame	20	124 x 30 x 17	0.0632	13
2x4 Frame	15	124 x 23 x 17	0.0484	14.3



Warranty

Americanlite® is pleased to provide a 6 year limited warranty covering the LED panels on this catalogue. Americanlite® warrants that the LED panels comply with Americanlite®'s published specifications and are free from defects in materials and workmanship.

All our equipment is CE, ETL or UL approved and manufactured with approved components. Americanlite® reserves the right to change or improve the design or components of any of its products due to parts availability or changes in standards, without assuming any obligation to modify any product previously manufactured and without notice. All equipment is tested and inspected before shipment.

This warranty is void if the product is operated outside of its normal operating conditions. The foregoing warranty does not apply to failures caused by acts of God or as a result of any abuse, misuse, abnormal use, or use in violation of any applicable standard, code or instructions for use in installations, including, but not limited to, those contained in the Standards for the International Electrotechnical Commission. Americanlite® reserves and has the right to examine failed fixtures to determine the cause of failure, excessive lumen depreciation and patterns of usage.