



LED<sup>®</sup>

**Streetlite™**

**americanlite<sup>®</sup>**

**We light your world™**



LED technology is rapidly becoming competitive with high-intensity discharge light sources for outdoor area lighting.

The primary appeal of using LEDs in roadway lighting is energy efficiency compared to high intensity discharge light sources such as high pressure sodium and metal halide of the same luminance. LED lighting consumes at least 60 percent less energy than conventional lighting and lumen decrease is smaller. Better color rendering index and better light distribution than conventional lighting. It is a reliable light source with an average life up to 100,000 hours, making it a maintenance free solution for applications where changing lights can be hazardous, difficult and expensive. LED outdoor luminaires can provide the required surface luminance using less energy with improved uniformity and significantly longer life.

Americanlite® LED Roadway fixtures optics are designed for optimized performance. We are able to design LED optics that are extremely efficient in utilizing delivered lumens according to task, eliminating wasted light and improving visual uniformity.

Ultimately, this translates to significant energy savings compared to traditional HID solutions by simply switching to a Americanlite® LED Roadway fixtures. We are able to maintain the same recommended IES light levels utilizing less delivered lumens and reducing energy consumption by as much as 60%.

It's not enough to simply place high power LEDs into existing luminaires. Thermal management is crucial. If the generated heat is not adequately removed, the LEDs will run at higher temperatures, not only lowering their efficiency, but also shortening their life and threatening their reliability. Americanlite® LED Roadway fixtures are specifically designed to handsomely address this issue. The luminaires feature state of the art IP65 drivers, to maximize LED performance and to extend LED life.



## Advantages of LED lighting

- Low power consumption and long and predictable lifetime.
- Low maintenance cost.
- More accurate color rendering.
- Quick turn on and off.
- Less attractive to nocturnal insects.
- Higher light output even at low temperatures.
- Contain no mercury, lead or any other known disposal hazard.
- LEDs don't contain Hg/Pb and don't emit poison gases.



**We light your world™**



## Venue™

40w/50w/60w/70w/75w/80w/90w  
100w/120w/150w/185w/240w  
Single Power & Power Selectable

Type II-M		
UL LISTED	DLC QUALIFIED	RoHS
WET LOCATION	IP66	IK09
TM21	LM80	LM79
Lumens up to 170LxW	Dim 0-10V	10kV Surge Protection
CCT 3K-6K	CRI >70	SDMC <6
VOLTS 120-277	PF >.90	THD <15%
-40°C~+50°C	120,000	10 YEAR Warranty

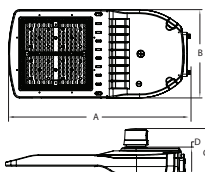
The Venue™ Series combines impressive aesthetics and state-of-the-art optical control resulting in significant energy savings. The Venue™ luminaire complies with the highest standards such as UL, DLC and Wet location. It offers an outstanding 148 lxw with precision engineered optical distribution that deliver superior control and maximize light levels.

The Venue™ luminaire delivers an innovative thermal management design that maximizes heat dissipation resulting in longer fixture and LED life. The rugged, die-cast fixture housing is IP66 rated, which provides years of reliable operation with minimal service requirements. Housing and cast parts are finished in polyester powder coat paint, for superior protection against fade and wear. The Venue™ luminaire is available in Type II-M with lumen packages ranging from 6,000 up to 34,200 lumens.

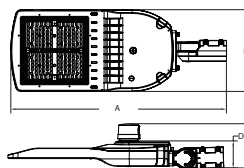
The Venue™ luminaire shapes the distribution and maximizes the performance. Designed with high efficiency PC optics and powerful Bridgelux® LED chips. UL, CE, approved and IP67 rated 0-10v dimming driver, universal voltage capacity 120v-277v 50/60Hz and a powerful UL 10KV surge protector device (SPD) included to protect extreme levels. Venue™ luminaire offers multiple options such as motion sensor, slipfitter mount and much more.

Whether the application is a roadway, parking lot or pedestrian walkway, The Venue™ luminaire will perform at the highest levels, providing energy savings and low maintenance for the years to come.

### Dimensions (mm)



Model	A	B	C	D
60w-150w	489	253	165	73
240w	595	299	156	93



With Slip fitter				
Model	A	B	C	D
60w-150w	683	253	165	84
240w	789	299	162	99

### Ordering information

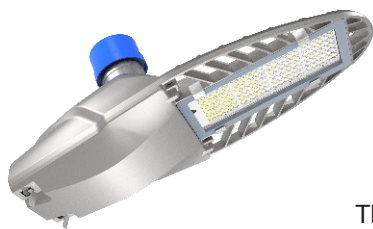
Single Power			Power Selectable			CCT		Options			
Item	Watts	Lumens	Item	Watts	Lumens	Blank	5000K	Blank	3 Pin Photobase	SF	Slipfitter
AL574850	60w	8740	AL574861	60w/50w/40w	8740/7400/6000	6	6000K	5B	5 Pin Photobase	SC	Short Cap
AL574851	90w	13680	AL574862	90w/75w/60w	13680/11650/9500	5	5700K	7B	7 Pin Photobase	S2	SPD 20KV
AL574852	120w	17100	AL574865	90w/80w/70w	13680/12320/11000	4	4000K	3P	3 Pin Photocell	MS	Motion Sensor
AL574853	240w	34200	AL574863	120w/100w/80w	17100/14700/12160	3	3000K	5P	5 Pin Photocell	R	Remote (Sensor)
			AL574866	150w/120w/90w	21000/17160/13140			7P	7 Pin Photocell		
			AL574864	240w/185w/150w/100w/60w	34200/27550/23750/16880/10250			N	No base		

### Notes

- Lumens: Single Power 60w-120w
  - 5000K 145 lxw
  - 6000K 150 lxw
  - 5700K 147 lxw
  - 4000K 143 lxw
  - 3000K 141 lxw
- Lumens: Single Power 240w
  - 5000K 143 lxw
  - 6000K 147 lxw
  - 5700K 145 lxw
  - 4000K 140 lxw
  - 3000K 138 lxw
- Lumens: Power Select
  - 60w/50w/40w: 145/148/150 lxw
  - 90w/75w/60w: 152/155/158 lxw
  - 90w/80w/70w: 152/154/157 lxw
  - 120w/100w/80w: 142/147/152 lxw
  - 150w/120w/90w: 140/ 143 / 146 lxw
  - 240w/185w/150w/100w/60w: 142/149/158/168/170 lxw
- Lumens based on 5000K
- LED Chips: Bridgelux 3030
- Lumen tolerance <10%
- Driver Brand:
  - 60w-120w: WeLEDPower
  - 240w: Sosen
- Surge Protection:
  - 60w-120w: L/N-PE: 6kV, L-N: 4kV
  - 240w: L/N-PE: 10kV, L-N: 6kV
- Lifespan: 120,000 @Case Tc <70°C
- BUG:
  - 60w/90w/120w: B3-U0-G3
  - 150w/240w: B4-U0-G3
- Salt Chamber Test @ 72 hours, projected to comply 400 hours
- EPA: 2.4 ft²
- Paint thickness >60µm
- Housing Thickness > 2mm
- With & w/o Slipfitter: diameter suitable for 45-60mm pole (inserts 90mm max)
- Max pole diameter 60mm
- Terminal block:
  - Safe connector #M29, 12-24AWG
- Motion Sensor #HB01DMS-A
- MS Remote #HBR03R
- The cable is UL certified, SJOW, Black color (Φ8±0.3MM), black/white/green wire core, wire 3×0.824MM2, 18AWG, 105°C, 300V (Standard wire is 1.2m, outside 1m)

### Packing information

Model	Pieces per master	Box Dimensions (cm)	CBM (Master)	Gross Weight (KG)
60w-150w	1	64 x 30.5 x 16	0.0312	4.1
240w	1	72 x 34.5 x 14	0.0347	6.9
60w-150w / Slip Fitter	1	75 x 30.5 x 16	0.0366	5.8
240w / Slip fitter	1	81 x 34.5 x 14	0.0391	8.2



## Viper™

30w/40w/50w/60w/90w/100w  
Single Power & Power Selectable

<b>Type II-S</b> 	<b>Type II-M</b> 
<b>IP66</b>	<b>IK08</b>
<b>LM80</b>	
<b>Lumens</b> up to 154 LxW	<b>Dim</b> 0-10V
	<b>up to 10kV</b> Surge Protection
<b>CCT</b> 3K-57K	<b>CRI</b> >80
	<b>SDMC</b> <6
<b>VOLTS</b> 120-277	<b>PF</b> >.90
	<b>THD</b> <20%

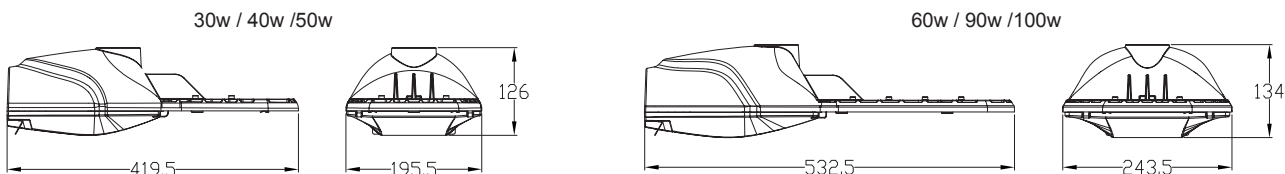
The Viper™ Series offers cutting-edge optical control and stunning aesthetics for great energy savings. The Viper™ luminaire satisfies the strictest requirements, including UL, IP66, and IK08. It provides a precisely tailored optical distribution that maximizes light levels and provides excellent control.

The Viper™ luminaire features a cutting-edge thermal management system that enhances heat dissipation, extending the fixture and LED life. The durable IP66-rated die-cast fixture housing offers years of dependable performance with little maintenance. For optimum protection against fading and wear, housing and cast pieces are painted with polyester powder coat paint (0.6-0.8mm thickness). The Type II-S (Standard) and Type II-M Viper™ luminaire comes in brightness packages ranging from 2250 to 15,000 lumens and up to 154 l x w.

The Viper™ luminaire shapes the distribution and maximizes the performance. Designed with potent Lumiled® SMD 2835 LED chips with PC high-efficiency optic cover. To achieve IK08 grade, a 5 mm PC lens was fitted. 0-10v dimmable driver, universal voltage capacity of 120v-277v 50/60Hz, 6KV Surge protection, and UL approved for wet locations. To safeguard severe levels, a potent UL 10KV surge protector device (SPD) may be chosen. The Viper™ luminaire offers a wide range for arm pole size: 42-60mm, as well as mounting Arm to Tilt: -5°, 0°, 5°, 10°, and 15° as standard.

The Viper™ luminaire will deliver the best performance regardless of the application—a road, a parking lot, or a pedestrian walkway—providing energy savings and no maintenance for years to come.

### Dimensions (mm)



### Ordering information

Single Power			Power Selectable			CCT	Dist. Type	Options
Item	Watts	Lumens	Item	Watts	Lumens			
AL574870	30w	4500	AL574876	30w/25w/15w	4500/3750/2250	<b>Blank</b> 5000K	<b>Blank</b> Type II-S	<b>Blank</b> 3 Pin Photobase
AL574871	40w	6000	AL574877	40w/30w/20w	6000/4500/3000	<b>6</b> 6000K	<b>M</b> Type II-M	<b>7B</b> 7 Pin Photobase
AL574872	50w	7500	AL574878	50w/40w/30w	7500/6000/4500	<b>5</b> 5700K		<b>3P</b> 3 Pin Photocell
AL574873	60w	9000	AL574879	60w/50w/40w	9000/7500/6000	<b>4</b> 4000K		<b>7P</b> 7 Pin Photocell
AL574874	90w	13500	AL574880	90w/75w/60w	13500/11250/9000	<b>3</b> 3000K		<b>N</b> No base
AL574875	100w	15000	AL574881	100w/80w/60w	15000/12000/9000			<b>S1</b> SPD 10KV

### Notes

- Lumens based on 5000K
- LED Chips: Lumileds 2835
- LED Modules : 1 (30-50w)
- LED Modules : 2 (60-100w)
- Lumen tolerance up to 7%
- Safety Standard: UL8750
- FCC Standard: Part 15 Class B
- Salt chamber test: 168 hours
- Lumens x Type II-S:
  - 6500K 154 lxw
  - 5700K 152 lxw
  - 5000K 150 lxw
  - 4000K 144 lxw
  - 3000K 138 lxw
- Lumens x Type II-M:
  - 6500K 143 lxw
  - 5700K 140 lxw
  - 5000K 138 lxw
  - 4000K 136 lxw
  - 3000K 135 lxw
- BUG x Type II-S:
  - 30w: B1-U0-G1
  - 40w-60w: B2-U0-G2
  - 90w/100w: B3-U0-G3
- BUG x Type II-M:
  - 30w: B1-U0-G1
  - 40w-90w: B2-U0-G2
  - 100w: B3-U0-G3
- Driver IP:
  - 30w-60w = IP42
  - 90w-100w = IP54
- Fixture Lens: 5 mm tempered glass
- LED Lens: PC 4.8 mm
- Driver Brand:
  - 30w-100w: Lifud
- Surge Protection:
  - L/N-PE:6kV, L-N: 6kV
- Lifespan:
  - 30-40w @Case Tc <75°C
  - 50-60w @Case Tc <70°C
  - 90-100w @Case Tc <65°C
- EPA:
  - 30w-50w=0.8 ft²
  - 60w-100w=1.2 ft²
- Suitable Arm size 42-60mm
- Arm inserts:
  - 30w-50w= max 70mm
  - 60w-100w= max 120mm
- Arm Tilt: -5°, 0°, 5°, 10°, 15°
- Paint thickness 0.6-0.8mm
- Body: ADC-12 Die Cast Aluminum
- Body: Wall Thickness is > 2mm
- Terminal Block: 20A 20-12 AWG
- Cable: 18AWG 3x0.824MM2 x 1m

### Packing information

Model	Pieces per master	Box Dimensions (cm)	CBM (Master)	Gross Weight (KG)
30w-50w	1	46.5 x 23 x 19.5	0.0208	3.2
60w-100w	1	59.5 x 27 x 21	0.0337	4.7 / 4.8 / 4.8



## Vanguard™

20w/30w/40w/50w/60w/80w/90w  
100w/120w/150w/180w/200w/250w

<b>Type II</b> 	<b>Type III</b> 
<b>IP66</b>	<b>IK09</b>
<b>LM79</b>	<b>LM80</b>
	<b>VOLTS</b>
100,000	100-277
<b>Lumens</b>	<b>PF</b>
130LxW	>.95
<b>THD</b>	<b>CCT</b>
<15%	6000K
<b>SDCM</b>	<b>CRI</b>
<5	>70
	<b>5 YEAR</b>
-20°C~+50°C	Warranty

The Vanguard™ Series combines impressive aesthetics and state-of-the-art optical control resulting in significant energy savings. The Vanguard™ luminaire offers a choice of 2 precision engineered optical distributions that deliver superior control and maximize light levels.

The Vanguard™ luminaire delivers an innovative thermal management design that maximizes heat dissipation resulting in longer fixture and LED life. The rugged, die-cast fixture housing is IP66 rated, which provides years of reliable operation with minimal service requirements. Housing and cast parts are finished in polyester powder coat paint, for superior protection against fade and wear. The Vanguard™ luminaire is available in Type II and III distributions with lumen packages ranging from 2,600 to 32,500 lumens.

The Vanguard™ luminaire shapes the distribution and maximize the performance. Designed with high efficiency optics, includes Philips® Luxeon® LED chips, (1800K= CREE XPE2 Amber 3535 Leds = wave length 560-700mm) UL driver (>50w) with built in 6kV surge protector UL, CE, approved and IP67 rated. Universal voltage capacity 100v-277v 50/60Hz. 0-10v Dimmable driver is optional, and a powerful 10KV or 20KV surge protector can be also installed for higher protection levels. Includes 30cm, 3x18 AWG cable.

Whether the application is a roadway, parking lot or pedestrian walkway, The Vanguard™ luminaire will perform at the highest levels, providing energy savings and low maintenance for the years to come.

### Dimensions

20w/30w/40w/50w/60w	80w/90w/100w	120w/150w	180w/200w/250w	Slipfitter
• Suitable for 35-50mm pole	• Optional arm coupling Ø 35-45 mm	• Tolerance: ±0.5mm		with Slipfitter
• With slip fitter suitable for 40-60mm pole				

### Ordering information

Item	Watts	Beam	Lumens	Item	Watts	Beam	Lumens	CCT	Options
AL574765	20w	II	2600	AL574775	20w	III	2600	<b>Blank</b>	6000K
AL574766	30w	II	4000	AL574776	30w	III	4000	<b>2</b>	1800K
AL574767	40w	II	5200	AL574777	40w	III	5200	<b>3</b>	3000K
AL574768	50w	II	6500	AL574778	50w	III	6500	<b>4</b>	4000K
AL574769	60w	II	7800	AL574779	60w	III	7800	<b>5</b>	5000K
AL574770	80w	II	10400	AL574780	80w	III	10400	1800K	60lxw
AL574771	90w	II	11700	AL574781	90w	III	11700	3000K	120 lxw
AL574772	100w	II	13000	AL574782	100w	III	13000	4000K	130 lxw
AL574773	120w	II	15600	AL574783	120w	III	15600	5000K	130 lxw
AL574774	150w	II	19500	AL574784	150w	III	19500	6000K	130 lxw
AL574788	180w	II	23400	AL574785	180w	III	23400		
AL574789	200w	II	26000	AL574786	200w	III	26000		
AL574790	250w	II	32500	AL574787	250w	III	32500		

### Notes

- 1800K= wave length 560-700mm / CREE XPE2 Amber 3535 Leds No CRI, CCT 1650-1720, 60 LXM
- All photocells & Photobase are UL or ETL
- 3 Pin Photocell = #JL-205C Electronic Fail On (Fail off available) 235 Joule
- 5/7 Pin Photocell = #JL251C (JL-253C also available)
- 3 Pin Photobase = #JL200
- 5 pin receptacle = JL-240XB
- 7 pin receptacle= JL-240XA
- LED Drivers are IP67 (UL Certificate >50w others CE)
- Glass Cover = 120 l x w / Not available for 20w & 30w
- Dimming option not available for 20-30-40 & 50w
- 5KV surge protection for 20W, 30W, 40W & 50W
- Power Factor: 20w/30w @ >0.92
- EPA @ horizontal mounting
  - 30w-60w=0.67ft²
  - 80w-100w=1.70ft²
  - 120w-150w=2.56ft²
  - 180w-250w=3.2ft²
- EPA @ 15° angle
  - 30w-60w=0.56ft²
  - 80w-100w=1.42ft²
  - 120w-150w=2.13ft²
  - 180w-250w=2.67ft²

### Certificates

- IP67 = EN 60529:1991+AC:2016-12
- IK09 = IEC 62262:2002
- Salt spray test according to EIN ISO 9227:2012 = 1000 hours Pass
- LVD Standards:
- EN 60598-2-3:20003+A1:2011
- EN 60598-1:2015+AC:2016
- EMC Standards:
- EN 55015:2013/A1:2015
- EN 61547:2009
- EN 61000-3-2:2014
- EN 61000-3-3:2013
- TM21

### Packing information

Model	Pieces per master	Box Dimensions(cm)	CBM (Master)	Gross Weight (KG)
20w/30w/40w/50w/60w	5	59 x 50 x 23	0.0678	11
80w/90w/100w	4	59 x 51 x 26	0.0782	14
120w/150w	4	56 x 69 x 32	0.1236	18
180w/200w/250w	4	81 x 70 x 41	0.2324	24



## Atria™

30w/40w/50w/60w



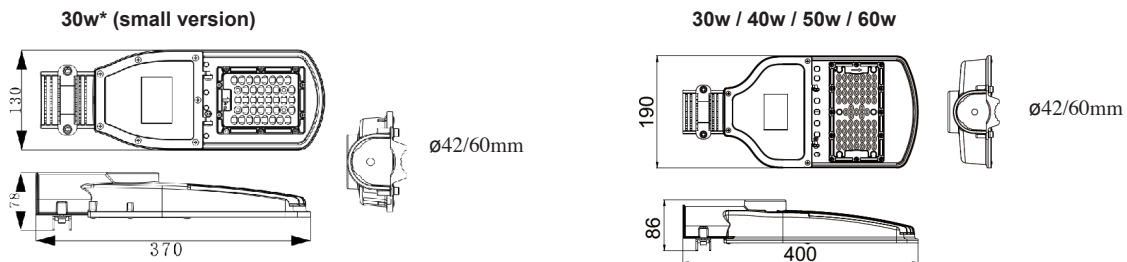
The Atria™ Series combines impressive aesthetics and state-of-the-art optical control resulting in significant energy savings. The Atria™ luminaire complies with the highest standards such as CE. It offers an outstanding up to 140 l x w with precision engineered optical distribution that delivers superior control and maximizes light levels.

The Atria™ luminaire delivers an innovative thermal management design that maximizes heat dissipation resulting in longer fixture and LED life. The rugged, die-cast fixture housing is IP66 rated, which provides years of reliable operation with minimal service requirements. Housing and cast parts are finished in polyester powder coat paint, for superior protection against fade and wear. The Atria™ luminaire is available in Type II with lumen packages ranging from 4000 up to 8,000 lumens.

The Atria™ luminaire shapes the distribution and maximizes the performance. Designed with high efficiency PC optics and powerful CREE 3030® LED chips. 0-10v Driver CE approved and IP65 rated, 6KV line earth protection, voltage range 100v-277v 50/60Hz and a powerful UL1449 10KA/KV surge protector device (SPD) included to protect extreme levels.

Whether the application is a roadway, parking lot or pedestrian walkway, The Atria™ luminaire will perform at the highest levels, providing energy savings and low maintenance for the years to come.

### Dimensions



### Ordering information

Item	Watts	Beam	Lumens	CCT	Options
AL574006	30w*	II	4200	<b>Blank</b> 5700K	<b>D</b> 0-10V Dim Driver <b>7B</b> 7 Pin Photobase
AL574000	30w	II	4200	<b>3</b> 3000K	<b>3P</b> 3 Pin Photocell <b>S1</b> 10kV Surge Protector
AL574001	40w	II	5600	<b>4</b> 4000K	<b>7P</b> 7 Pin Photocell <b>S2</b> 20kV Surge Protector
AL574002	50w	II	7000	<b>5</b> 5000K	<b>NB</b> No Photobase
AL574003	60w	II	8400	<b>6</b> 6500K	

### Notes

- BUG Rate: 30w/40w=B1-U0-G1  
50w/60w=B2-U0-G2
- Life time = 100,000 hours @ <72Tcase (C)
- CREE 303 LED Chip
- 3 Pin photobase is standard
- Suitable for pole size: 42mm or 60mm
- Lumen tolerance 15%

### Certificates & Tests

- |               |                                 |
|---------------|---------------------------------|
| Certificates: | Test Standards:                 |
| • ISO 9001    | • EN 60598-1:2015               |
| • LVD         | • EN 60598-2-3:2003+A1:2011     |
| • CE          | • EN 62031:2008+A1:2013+A2:2015 |
| • LM79        | • EN 62493:2015                 |
| • ISTM        | • EN 62471:2008                 |
| • IK          |                                 |
| • IP          |                                 |

### Packing information

Model	Pieces per master	Box Dimensions (cm)	CBM (Master)	Gross weight (Kg)
Atria 30w*	1	39 x 15 x 13	0.0076	1.7
Atria 30w / 40w	1	42 x 21 x 14	0.0123	2.4
Atria 50w / 60w	1	42 x 21 x 14	0.0123	2.5



## Ventra™

30w/40w/50w/60w/80w/100w  
120w/150w/180w/200w/240w

<b>Type II</b> 	<b>Type III</b> 
<b>CE</b>	
<b>IP66</b>	<b>IK08</b>
<b>VOLTS</b> 100-277	<b>Lumens</b> up to 130LxW
<b>6kV</b> Surge Protection	<b>THD</b> <20%
<b>CRI</b> >70	<b>5 YEAR</b> Warranty

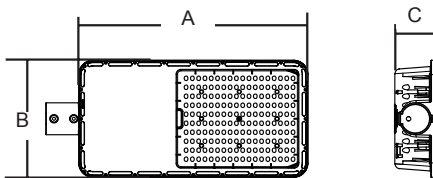
The Ventra™ Series combines a classic form and state-of-the-art optical control resulting in significant energy savings. The Ventra™ luminaire offers a choice of 2 precision engineered optical distributions that deliver superior control and maximize light levels.

The Ventra™ luminaire delivers an innovative thermal management design that maximizes heat dissipation resulting in longer fixture and LED life. Rugged die-cast fixture housing which provides years of reliable operation with minimal service requirements. Housing and cast parts are finished in polyester powder coat paint, for superior protection against fade and wear. The Ventra™ luminaire is available in Type II and III distributions with lumen packages ranging from 3,900 to 31,200 lumens.

The Ventra™ luminaire offers the solution for budget projects, without sacrificing quality level. Ventra™ luminaires are IP66, IK08 rated. Efficiency up to 130 lx/w, will perform with savings, with a power factor > .95 and <20% THD. We made it easy, 3 pin photocell and photobase are included to perform precisely during dusk to dawn.

Whether the application is a roadway, parking lot or pedestrian walkway, The Ventra™ luminaire will perform at the highest levels, providing energy savings and low maintenance for the years to come.

### Dimensions (mm)



Model	A	B	C
30w-60w	413.1	173.3	77.6
80w-120w	505.7	222.6	86.3
150w-180w	583.1	260.3	90.7
200w-240w	650.2	290.2	100.6

Suitable for 40-60mm pole

### Ordering information

Item	Watts	Beam	Lumens	Item	Watts	Beam	Lumens	Options
AL574718	30w	II	3900	AL574729	30w	III	3000	<b>Blank</b> 6500K
AL574719	40w	II	5200	AL574730	40w	III	4400	<b>5</b> 5000K
AL574720	50w	II	6500	AL574731	50w	III	5500	<b>4</b> 4000K
AL574721	60w	II	7800	AL574732	60w	III	6600	<b>D</b> 0-10V dimmable
AL574722	80w	II	10400	AL574733	80w	III	8800	<b>3B</b> 3 pin photobase
AL574723	100w	II	13000	AL574734	100w	III	11000	<b>3P</b> 3 pin base and photocell
AL574724	120w	II	15600	AL574735	120w	III	13200	<b>7P</b> 7 pin base and photocell
AL574725	150w	II	19500	AL574736	150w	III	16500	<b>SP</b> 10KV SPD
AL574726	180w	II	23400	AL574737	180w	III	19800	
AL574727	200w	II	26000	AL574738	200w	III	22000	
AL574728	240w	II	31200	AL574739	240w	III	26400	

### Notes

- Pole diameter: 30-60mm
- Power & Lumen tolerance 7%
- Cable for power: 3\*0.5mm<sup>2</sup> (≈20AWG) 9-10 cm
- Type III with glass = 110 lxw

### Packing information

With Photocell or with Photobase

Model	Pieces per master	Box Dimensions (cm)	CBM (Master)	Gross Weight (KG)
30w-60w	8	45 x 44 x 40	0.0792	12
80w-120w	6	54.5 x 38 x 50	0.1035	15
150w-180w	4	61 x 50 x 28	0.0854	15
200w-240w	3	69 x 41.5 x 32.5	0.0930	15.5

Fixture only

Model	Pieces per master	Box Dimensions (cm)	CBM (Master)	Gross Weight (KG)
30w-60w	8	44 x 37 x 39	0.0634	11
80w-120w	6	54 x 32 x 48	0.0829	14.2
150w-180w	6	61 x 32 x 55.5	0.1083	20.6
200w-240w	3	68 x 33 x 32	0.0718	15.5



## Ventra E™

50w/60w/100w/150w/200w

<b>Type II</b> 	<b>Type III</b> 
<b>CE</b>	
<b>IP66</b>	<b>IK08</b>  30,000
<b>VOLTS</b> 85-265	<b>Lumens</b> 100LxW
<b>4kV</b> Surge Protection	<b>PF</b> >.95
<b>THD</b> <20%	<b>CCT</b> 6500K
<b>CRI</b> >70	<b>3 YEAR</b> Warranty  -20°C~+50°C

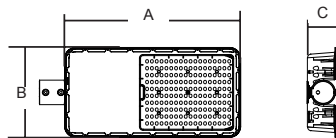
The Ventra E™ Series combines a classic form and state-of-the-art optical control resulting in significant energy savings. The Ventra E™ luminaire offers a precision engineered optical distribution Type II or Type III that delivers superior control and maximize light levels.

The Ventra E™ luminaire delivers an innovative thermal management design that maximizes heat dissipation resulting in longer fixture and LED life. Rugged die-cast fixture housing which provides years of reliable operation with minimal service requirements. Housing and cast parts are finished in polyester powder coat paint, for superior protection against fade and wear. The Ventra E™ luminaire is available in Type II and Type III distribution with lumen packages ranging from 5,000 to 20,000 lumens.

The Ventra E™ luminaire offers the solution for budget projects, without sacrificing quality level. Ventra E™ luminaires are IP66, IK08 rated. Efficiency up to 100 lxw, will perform with savings, with a power factor >.95 and <20% THD. We made it easy, 3 pin photocell and photobase are included to perform precisely during dusk to dawn.

Whether the application is a roadway, parking lot or pedestrian walkway, The Ventra E™ luminaire will perform at the highest levels, providing energy savings and low maintenance for the years to come.

### Dimensions (mm)



Model	A	B	C
50w/60w	413.1	173.3	77.6
100w	505.7	222.6	86.3
150w	583.1	260.3	90.7
200w	650.2	290.2	100.6

Suitable for 40-60mm pole

### Ordering information

Item	Watts	Beam	Lumens	CCT	Options	Dist. Type
AL574740	50w	II	5000	<b>Blank</b> 6500K	<b>3B</b> 3 pin photobase	<b>Blank</b> Type II
AL574741	60w	II	6000	<b>5</b> 5000K	<b>3P</b> 3 pin base & photocell	<b>3</b> Type III
AL574742	100w	II	10000	<b>4</b> 4000K	<b>SP</b> 10KV SPD	(Glass Cover)
AL574743	150w	II	15000			
AL574744	200w	II	20000			

### Notes

- Power & Lumen tolerance 5%
- Pole diameter: 30-60mm
- Cable for power: 3\*18AWG (9-10 cm length)

### Packing information

Photocell or with Photobase

Model	Pieces per master	Box Dimensions (cm)	CBM (Master)	Gross Weight (KG)
50w/60w	8	45 x 44 x 40	0.0792	12
100w	6	54.5 x 38 x 50	0.1035	15
150w	4	61 x 50 x 28	0.0854	15
200w	3	69 x 41.5 x 32.5	0.0930	15.5

Fixture only

Model	Pieces per master	Box Dimensions (cm)	CBM (Master)	Gross Weight (KG)
50w/60w	8	44 x 37 x 39	0.0634	11
100w	6	54 x 32 x 48	0.0829	14.2
150w	6	61 x 32 x 55.5	0.1083	20.6
200w	3	68 x 33 x 32	0.0718	15.5





## Sky 3™

50w/60w/100w/150w/200w

<b>Type II</b> 	<b>IP65</b>	<b>IK06</b>	 30,000
<b>VOLTS</b> 85-265	<b>PF</b> >.90	<b>Lumens</b> 100 L/W	
<b>4kV</b> Surge Protection	<b>CCT</b> 6500K	<b>THD</b> <15%	
<b>CRI</b> 70	 -20°C-45°C	<b>3 YEAR</b> Warranty	

Americanlite® SKY 3™ Series offers the latest LED technology for outdoor lighting. We have developed an outstanding combination of high performance, aesthetics & bright LED's to create an efficient low-cost fixture. Available in 50w, 60w, 100w, 150w and 200w. LED life time of 30,000 hours, can easily replace 70w and up to 400w HID fixtures.

Aerodynamic thermal dissipating housing design is made of extruded aluminum in dark gray. The unique design of linear fins allows natural removal of dirt and debris, and provides high heat dissipation. State of the art driver with universal voltage capacity 85-265V 50/60Hz with 4KV surge protection. Premium powerful LED chip, CRI 70, 6500K low glare, with a glass optical lens permits more lumen output and superior visual comfort.

SKY 3™ Series offers Type II light distribution. Type II distribution is used for wide walkways, on ramps and entrance roadways, Parking areas, as well as other long, narrow lighting applications. This type is meant for lighting larger areas and usually is located near the roadside.

### Dimensions (mm)



L W H  
50w / 60w 500 x 210 x 60



L W H  
150w 850 x 320 x 80



L W H  
100w 720 x 270 x 80



L W H  
200w 950 x 330 x 80

### Ordering information

Item	Watts	Lumens	CCT	Options
AL584059	50w	5000	<b>Blank</b> 6500K	<b>Blank</b> 3 Pin Photobase
AL584060	60w	6000	<b>5</b> 5000K	<b>NB</b> No Photobase
AL584061	100w	10000		<b>P</b> 3 Pin Photocell
AL584062	150w	15000		<b>S1</b> 10KV SPD
AL584063	200w	20000		

### Notes

- Lumen / Power Tolerance:  
50w - 150w ± 5%  
200w ± 10%
- COB LED Chips
- Arm compartment:  
50w = 50mm  
100w-200w = 60mm
- Includes: Arm screws 4cm length

### Packing information

Model	Pieces / master	Box Dimensions (cm)	CBM (Master)	Gross weight (Kg)
50w / 60w	1	52 x 22 x 8	0.0091	1.4
100w	1	74 x 28 x 11	0.0227	3.1
150w	1	87 x 33.5 x 11	0.0320	4.3
200w	1	96.5 x 34 x 11	0.0360	6



## Sky E3™

50w/100w/150w/200w

<b>Type II</b> 	<b>IP65</b>	<b>IK06</b>	 30,000
<b>VOLTS</b> 100-277	<b>PF</b> >.90	<b>Lumens</b> 80 L/W	
<b>4kV</b> Surge Protection	<b>CCT</b> 6500K	<b>THD</b> <15%	
<b>CRI</b> 70	 -20°C~45°C	<b>2 YEAR</b> Warranty	

Americanlite® SKY E3™ Series offers the latest LED technology for outdoor lighting. We have developed an outstanding combination of high performance, aesthetics & bright LED's to create an efficient low-cost fixture. Available in 50w, 100w, 150w and 200w. LED life time of 30,000 hours, can easily replace 70w and up to 400w HID fixtures.

Aerodynamic thermal dissipating housing design is made of extruded aluminum in dark gray. The unique design of linear fins allows natural removal of dirt and debris, and provides high heat dissipation. State of the art driver with universal voltage capacity 85-265V 50/60Hz with 4KV surge protection. Premium powerful LED chip, CRI 70, 6500K low glare, with a glass optical lens permits more lumen output and superior visual comfort.

SKY E3™ Series offers Type II light distribution. Type II distribution is used for wide walkways, on ramps and entrance roadways, Parking areas, as well as other long, narrow lighting applications. This type is meant for lighting larger areas and usually is located near the roadside.

### Dimensions (mm)



L W H  
50w 500 x 210 x 60



L W H  
150w 850 x 320 x 80



L W H  
100w 720 x 270 x 80



L W H  
200w 950 x 330 x 80

### Ordering information

Item	Watts	Lumens	CCT	Options
AL584054	50w	4000	<b>Blank</b> 6500K	<b>Blank</b> 3 Pin Photobase
AL584055	100w	8000	<b>5</b> 5000K	<b>NB</b> No Photobase
AL584056	150w	12000		<b>P</b> 3 Pin Photocell
AL584057	200w	16000		

### Notes

- Lumen / Power Tolerance:  
50w - 150w ± 5%  
200w ± 10%
- COB LED Chips
- Arm compartment:  
50w = 50mm  
100w-200w = 60mm
- Includes: Arm screws 4cm length

### Packing information

Model	Pieces / master	Box Dimensions (cm)	CBM (Master)	Gross weight (Kg)
50w	1	52 x 22 x 8	0.0091	1.4
100w	1	74 x 28 x 11	0.0227	3.1
150w	1	87 x 33.5 x 11	0.0320	4.3
200w	1	96.5 x 34 x 11	0.0360	6



## Leaf™

30w/50w/60w/90w/100w  
120w/150w/200w

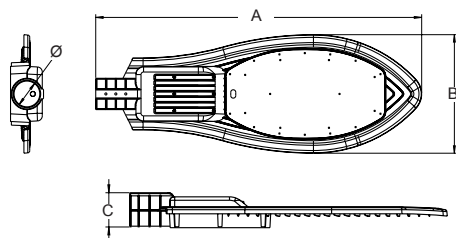
<b>Type II</b> 	<b>IP65</b>	<b>IK06</b>	 50,000
<b>VOLTS</b> 85-277	<b>PF</b> ≥.90	<b>Lumens</b> 110 L/W	
<b>4kV</b> Surge Protection	<b>CCT</b> 6500K	<b>THD</b> <15%	
<b>CRI</b> ≥ 70	 -25°C~50°C	<b>3 YEAR</b> Warranty	

Americanlite® Leaf™ Series offers the latest LED technology for outdoor lighting. We have developed an outstanding combination of high performance, aesthetics & bright LED's to create an efficient low-cost fixture. Available in 30w, 50w, 60w, 90w,100w, 120w, 150w and 200w. LED life time of 50,000 hours, can easily replace 70w and up to 400w HID fixtures.

Aerodynamic thermal dissipating housing design is made of extruded aluminum in Gray. The unique design of linear fins allows natural removal of dirt and debris and provides high heat dissipation. State of the art driver with universal voltage capacity 85-277V 50/60Hz with 4KV surge protection. Premium powerful LED chip, low glare combined with a PC optical lens resulting more lumen output and superior visual comfort. 3 Pin Base & Photocell (Button Cell optional) allows a controlled dusk to down operation while contributing to a cleaner fixture aesthetics.

Leaf™ Series offers Type II light distribution. Type II distribution is used for wide walkways, on ramps and entrance roadways, Parking areas, as well as other long, narrow lighting applications. This type is meant for lighting larger areas and usually is located near the roadside.

### Dimensions (mm)



Model	A	B	C	Ø
30w	445	155	66	55
50w/60w	550	200	75	55
90w-120w	700	245	100	65
150w / 200w	770	280	100	65

### Ordering information

Item	Watts	Lumens	Options
AL584070	30w	3300	<b>Blank</b> 3 Pin Base & Photocell
AL584071	50w	5500	<b>BP</b> Button Photocell
AL584072	60w	6600	<b>S1</b> 10KV SPD
AL584073	90w	9900	
AL584074	100w	11000	
AL584075	120w	13200	
AL584076	150w	16500	
AL584077	200w	22000	

### Notes

- Lumen / Power Tolerance:  
30w-150w ± 5%  
200w ± 10%
- Suitable for Poles:  
30w-60w = 50mm  
90w-200w = 60mm
- Includes: Arm screws 4cm length

### Packing information

Model	Pieces / master	Box Dimensions (cm)	CBM (Master)	Gross weight (Kg)
30w	10	42.5 x 34 x 46.5	0.0671	10.3
50w / 60w	10	45 x 45 x 58	0.1174	11.6
90w-120w	1	71 x 25.5 x 11.5	0.0208	2.6
150w / 200w	1	78 x 29 x 11.5	0.0260	3.2

## Rúa™ Series

30w / 50w / 100w



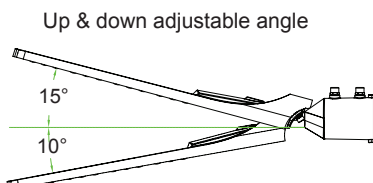
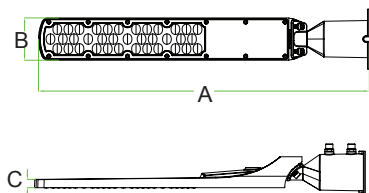
<b>Type II</b> 			
<b>IP65</b>	<b>IK08</b>	<b>LM80</b>	
<b>Lumens</b> 120LxW	<b>4kV</b> Surge Protection	<b>CCT</b> 3K-65K	
<b>CRI</b> >80	<b>UGR</b> 15	<b>VOLTS</b> 100-277	
<b>PF</b> >.90	<b>THD</b> <20		
	<b>3 YEAR</b> Warranty		

The modern style of the Rúa™ Series features a highly refined aesthetic that blends seamlessly with its environment. The Rúa™ luminaire offers the benefits of the latest in LED technology into a high performance, high efficacy, long-life luminaire, providing energy savings and low maintenance for the years to come.

The Rúa™ luminaire shapes the distribution and maximizes the performance. Designed with high efficiency PC optics and our proprietary DOB system, Rúa™ luminaire innovative thermal management design maximizes heat dissipation resulting in longer fixture and LED life. The rugged, die-cast fixture housing is IP65 rated, which provides years of reliable operation with minimal service requirements. Housing and cast parts are finished in polyester powder coated paint, for superior protection against fade and wear. The Rúa™ luminaire is available in Type II-M with lumen packages ranging from 3,600 up to 12,000 lumens. Button photocell allows a controlled dusk to down operation while contributing to a cleaner fixture aesthetics.

The Rúa™ Series is a sleek yet powerful luminaire that comes in a small package that is perfect for lower mounting heights and pedestrian scale applications including campuses, bike paths, walkways, and retail sites.

### Dimensions (mm)



Model	A	B	C
30w	424.4	67.3	12.6
50w	507.5	68.3	13.2
100w	596.7	76.3	15.0



### Ordering information

Item	Watts	Lumens	CCT	Options	Arm Compartment
AL574746	30w	3600	<b>Blank</b> 6500K	<b>Blank</b> Photocell Sensor	<b>Blank</b> 40-60mm
AL574747	50w	6000	<b>4</b> 4000K	<b>NP</b> No Photocell Sensor	<b>A</b> <40mm
AL574748	100w	12000	<b>3</b> 3000K	<b>G</b> Gray	
				<b>S1</b> SPD 10KV	

### Notes

- Lumens based on 6500K
- Lumens: 6500K 120lxw, 4000K 115lxw, 3000K 110lxw
- Lumen tolerance <10%
- LED Chips: Sanan 2835  
Total # LED Chips: 30w: 48 pcs, 50w: 72 pcs, 100w: 144 pcs
- Dist Type II = 70x140°
- Surge Protection: 30w = >3kV, 50w-100w = >4kV
- PC Lens IK08
- Arm compartment: 40-60mm = Standard, <40mm = Optional
- Cable: Spec: 0.75mm<sup>2</sup> (H05RN-F) x 3C, Length: 300mm ±10mm

### Packing information

Model	Pieces per master	Box Dimensions (cm)	CBM (Master)	Gross Weight (KG)
30w	20	47 x 43 x 45	0.0909	13
50w	20	53.5 x 47.5 x 44	0.0105	18
100w	20	61.5 x 46.5 x 44	0.1258	21.4



## Warranty

Americanlite® is pleased to provide a 5 year limited warranty covering the LED fixtures in this catalogue. Americanlite® warrants that the LED fixtures comply with Americanlite®'s published specifications and are free from defects in materials and workmanship.

All our equipment is CE, ETL or UL approved and manufactured with approved components. Americanlite® reserves the right to change or improve the design or components of any of its products due to parts availability or changes in standards, without assuming any obligation to modify any product previously manufactured and without notice. All equipment is tested and inspected before shipment.

This warranty is void if the product is operated outside of its normal operating conditions. The foregoing warranty does not apply to failures caused by acts of God or as a result of any abuse, misuse, abnormal use, or use in violation of any applicable standard, code or instructions for use in installations, including, but not limited to, those contained in the Standards for the International Electrotechnical Commission. Americanlite® reserves and has the right to examine failed fixtures to determine the cause of failure, excessive lumen depreciation and patterns of usage.