



UL Backlite™ Panel

americanlite®

We light your world™





Backlite™ Series

DLC 4.4 Premium

30w / 40w / 50w



Lumens
125LXW

DIM
0-10V

CCT
3-65K

CRI
80

120°
Beam Angle

SDCM
<5

UGR
≤22

1kV
Surge Protector

VOLTS
120-277

PF
>.90

THD
<15%

-20°~+40°C

60,000

6
YEAR
Warranty

Americanlite® UL Backlite™ LED Panels provides quality performance and pleasing aesthetics. Developed with the latest generation of solid- state components and electronic driver technologies, these panels are ideal for both new construction and renovation of existing fluorescent fixtures.

Narrow aluminum frame is tightly held to cold steel back plate to protect the LEDs and optical area. Corners are seamless with a narrow angle to provide a refined finish and maximize the light emitting surface.

White frosted lens with smooth pattern provides uniform illumination as well as scratch and impact resistance. The Lens is constructed of PS with specialized features to optimize light extraction providing excellent efficiency. Long-Life LED system (LED PCB) coupled with UL electronic driver with 1KV surge protection, to deliver optimal performance. CCT, from 3000K up to 6500K with a minimum of CRI 80 and 60,000 hours.

Americanlite® UL Backlite™ LED Panels are optimized for shallow plenum grid ceilings but may also be surface, suspended mounted using the optional kits.

Americanlite® UL Backlite™ LED Panels are an excellent lighting solution for commercial office spaces, schools, healthcare facilities and retail merchandising areas.

Ordering information

Item	Power	Size (mm)	CCT	Lumens	Options	Accessories
AL674925	30w	603x603x39	3000K	3750	E1 ER 4w AL585005 E2 ER 8w AL585008	Hanging kit (iron wire 1m) AL674900 2 x 2 AL674901 1 x 4 & 2 x 4
AL674926	30w	603x603x39	4000K	3750		
AL674927	30w	603x603x39	5000K	3750		
AL674928	30w	603x603x39	6500K	3750		
AL674929	40w	603x603x39	3000K	5000		Frame for Surface mount AL674902 2 x 2 AL674903 1 x 4 AL674904 2 x 4
AL674930	40w	603x603x39	4000K	5000		
AL674931	40w	603x603x39	5000K	5000		
AL674932	40w	603x603x39	6500K	5000		
AL674933	40w	303x1213x39	3000K	5000		Drywall Recessed Cips kit AL674921 2 x 2 AL674922 1 x 4 / 2 x 4
AL674934	40w	303x1213x39	4000K	5000		
AL674935	40w	303x1213x39	5000K	5000		
AL674936	40w	303x1213x39	6500K	5000		
AL674937	50w	603x1213x39	3000K	6250		
AL674938	50w	603x1213x39	4000K	6250		
AL674939	50w	603x1213x39	5000K	6250		
AL674940	50w	603x1213x39	6500K	6250		

Notes

- Lumen tolerance +- 5%
- Height 31.5mm / 39mm including driver
- Output Voltage 36-43VDC
- Recommended use per day 24/7 in ambient temp of 25°C. In temps >25° may result in shorter lifetime of the product
- ANSI C82.77 Surge Protection

Packing information

Model	Pieces per master	Box Dimensions (cm)	CBM (Master)	Gross Weight (KG)
2x2	4	66.5 x 16 x 67	0.0712	10
1x4	4	127.5 x 16 x 37	0.0754	10.5
2x4	4	127.5 x 16 x 67	0.1366	18.5

Model	Pieces per master	Box Dimensions (cm)	CBM (Master)	Gross Weight (KG)
2x2 Frame	20	66 x 30 x 17	0.0336	12.3
1x4 Frame	20	124 x 30 x 17	0.0632	13
2x4 Frame	15	124 x 23 x 17	0.0484	14.3



Backlite™ Series

DLC 4.4 Premium
CCT & Power Selectable



Americanlite® UL Backlite™ LED Panels with Selectable Lite™ provides the ability to change the CCT and the power with the flip of a switch and cater to the needs of a space. Too warm or too cool? too bright? Simply toggle the integrated switch to your desired setting and you are done!

Americanlite® UL Backlite™ LED Panels are developed with the latest generation of solid-state components and electronic driver technologies, Narrow aluminum frame is tightly held to cold steel back plate to protect the LEDs and optical area. Corners are seamless with a narrow angle to provide a refined finish and maximize the light emitting surface.

White frosted lens with smooth pattern provides uniform illumination as well as scratch and impact resistance. The Lens is constructed of PS with specialized features to optimize light extraction providing excellent efficiency. Long-Life LED system (LED PCB) coupled with UL electronic driver with 1KV surge protection, to deliver optimal performance. Selectable Power 20w/25w/30w, 20w/30w/40w, 30w/35w/40w or 30w/40w/50w and Selectable CCT, from 3500K up to 6500K with a minimum of CRI 80 and 60,000 hours.

Americanlite® UL Backlite™ LED Panels are optimized for shallow plenum grid ceilings but may also be surface, suspended mounted using the optional kits.

Americanlite® UL Backlite™ LED Panels are an excellent lighting solution for commercial office spaces, schools, healthcare facilities and retail merchandising areas.

Ordering information

Item	Selectable Power	Size (mm)	Selectable CCT	Lumens	Options	Accessories		
AL674941	20w/25w/30w	603x603x39	35K/4K/5K	2500/3125/3750	E1 ER 4w AL585005 E2 ER 8w AL585008	Hanging kit (iron wire 1m) AL674900 2 x 2 AL674901 1 x 4 & 2 x 4 Frame for Surface mount AL674902 2 x 2 AL674903 1 x 4 AL674904 2 x 4 Drywall Recessed Cips kit AL674921 2 x 2 AL674922 1 x 4 / 2 x 4		
AL674942	20w/25w/30w	603x603x39	3K/4K/6K	2500/3125/3750				
AL674973	20w/30w/40w	603x603x39	35K/4K/5K	2500/3750/5000				
AL674974	20w/30w/40w	603x603x39	3K/4K/6K	2500/3750/5000				
AL674943	20w/25w/30w	303x1213x39	35K/4K/5K	2500/3125/3750				
AL674944	20w/25w/30w	303x1213x39	3K/4K/6K	2500/3125/3750				
AL674945	30w/35w/40w	603x1213x39	35K/4K/5K	3750/4375/5000				
AL674946	30w/35w/40w	603x1213x39	3K/4K/6K	3750/4375/5000				
AL674975	30w/40w/50w	603x1213x39	35K/4K/5K	3750/5000/6250				
AL674976	30w/40w/50w	603x1213x39	3K/4K/6K	3750/5000/6250				
AL674977	30w/40w/50w	603x1213x39	4K/5K/65K	3750/5000/6250				
Item	Single Power	Size (mm)	Selectable CCT	Lumens				
AL674971	50w	603x1213x39	35K/4K/5K	6250/6250/6250				
AL674972	50w	603x1213x39	4K/5K/65K	6250/6250/6250				

Notes

- Lumen tolerance +/- 5%
- Height 31.5mm / 39mm including driver
- For Selectable Power lumens based on highest wattage
- Output Voltage 36-43VDC
- Recommended use per day 24/7 in ambient temp of 25°C. In temps >25° may result in shorter lifetime of the product
- ANSI C82.77 Surge Protection

Packing information

Model	Pieces per master	Box Dimensions (cm)	CBM (Master)	Gross Weight (KG)
2x2	4	66.5 x 16 x 67	0.0712	10
1x4	4	127.5 x 16 x 37	0.0754	10.5
2x4	4	127.5 x 16 x 67	0.1366	18.5

Model	Pieces per master	Box Dimensions (cm)	CBM (Master)	Gross Weight (KG)
2x2 Frame	20	66 x 30 x 17	0.0336	12.3
1x4 Frame	20	124 x 30 x 17	0.0632	13
2x4 Frame	15	124 x 23 x 17	0.0484	14.3



Backlite™ Series

30w / 40w / 50w



Lumens
100LXW

DIM
0-10V

CCT
3-65K

CRI
80

120°
Beam Angle

SDCM
<5

UGR
≤22

1kV
Surge Protector

VOLTS
120-277

PF
>.90

THD
<15%

-20°~+40°C

60,000

6 YEAR
Warranty

Americanlite® UL Backlite™ LED Panels provides quality performance and pleasing aesthetics. Developed with the latest generation of solid-state components and electronic driver technologies, these panels are ideal for both new construction and renovation of existing fluorescent fixtures.

Narrow aluminum frame is tightly held to cold steel back plate to protect the LEDs and optical area. Corners are seamless with a narrow angle to provide a refined finish and maximize the light emitting surface.

White frosted lens with smooth pattern provides uniform illumination as well as scratch and impact resistance. The Lens is constructed of PS with specialized features to optimize light extraction providing excellent efficiency. Long-Life LED system (LED PCB) coupled with UL electronic driver with 1KV surge protection, to deliver optimal performance. CCT from 3000K up to 6500K with a minimum of CRI 80 and 60,000 hours.

Americanlite® UL Backlite™ LED Panels are optimized for shallow plenum grid ceilings but may also be surface, suspended mounted using the optional kits.

Americanlite® UL Backlite™ LED Panels are an excellent lighting solution for commercial office spaces, schools, healthcare facilities and retail merchandising areas.

Ordering information

Item	Power	Size (mm)	CCT	Lumens	Options	Accessories
AL674905	30w	603x603x39	3000K	3000	E1 ER 4w AL585005 E2 ER 8w AL585008	Hanging kit (iron wire 1m) AL674900 2 x 2 AL674901 1 x 4 & 2 x 4
AL674906	30w	603x603x39	4000K	3000		
AL674907	30w	603x603x39	5000K	3000		
AL674908	30w	603x603x39	6500K	3000		
AL674909	40w	603x603x39	3000K	4000		Frame for Surface mount AL674902 2 x 2 AL674903 1 x 4 AL674904 2 x 4
AL674910	40w	603x603x39	4000K	4000		
AL674911	40w	603x603x39	5000K	4000		
AL674912	40w	603x603x39	6500K	4000		
AL674913	40w	303x1213x39	3000K	4000		Drywall Recessed Cips kit AL674921 2 x 2 AL674922 1 x 4 / 2 x 4
AL674914	40w	303x1213x39	4000K	4000		
AL674915	40w	303x1213x39	5000K	4000		
AL674916	40w	303x1213x39	6500K	4000		
AL674917	50w	603x1213x39	3000K	5000		
AL674918	50w	603x1213x39	4000K	5000		
AL674919	50w	603x1213x39	5000K	5000		
AL674920	50w	603x1213x39	6500K	5000		

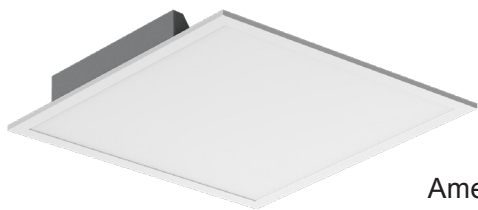
Notes

- Lumen tolerance +- 5%
- Height 31.5mm / 39mm including driver
- Output Voltage 36-43VDC
- Recommended use per day 24/7 in ambient temp of 25°C. In temps >25° may result in shorter lifetime of the product
- ANSI C82.77 Surge Protection

Packing information

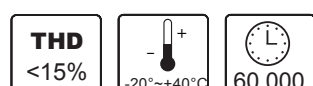
Model	Pieces per master	Box Dimensions (cm)	CBM (Master)	Gross Weight (KG)
2x2	4	66.5 x 16 x 67	0.0712	10
1x4	4	127.5 x 16 x 37	0.0754	10.5
2x4	4	127.5 x 16 x 67	0.1366	18.5

Model	Pieces per master	Box Dimensions (cm)	CBM (Master)	Gross Weight (KG)
2x2 Frame	20	66 x 30 x 17	0.0336	12.3
1x4 Frame	20	124 x 30 x 17	0.0632	13
2x4 Frame	15	124 x 23 x 17	0.0484	14.3



Backlite™ Series

CCT & Power Selectable



Americanlite® UL Backlite™ LED Panels with Selectable Lite™ provides the ability to change the CCT and the power with the flip of a switch and cater to the needs of a space. Too warm or too cool? too bright? Simply toggle the integrated switch to your desired setting and you are done!

Americanlite® UL Backlite™ LED Panels are developed with the latest generation of solid-state components and electronic driver technologies, Narrow aluminum frame is tightly held to cold steel back plate to protect the LEDs and optical area. Corners are seamless with a narrow angle to provide a refined finish and maximize the light emitting surface.

White frosted lens with smooth pattern provides uniform illumination as well as scratch and impact resistance. The Lens is constructed of PS with specialized features to optimize light extraction providing excellent efficiency. Long-Life LED system (LED PCB) coupled with UL electronic driver with 1KV surge protection, to deliver optimal performance. Selectable Power 20w/25w/30w or 30w/35w/40w and Selectable CCT, from 3500K up to 6500K with a minimum of CRI 80 and 60,000 hours. Also available in Single Power 50w.

Americanlite® UL Backlite™ LED Panels are optimized for shallow plenum grid ceilings but may also be surface, suspended mounted using the optional kits.

Americanlite® UL Backlite™ LED Panels are an excellent lighting solution for commercial office spaces, schools, healthcare facilities and retail merchandising areas.

Ordering information

Item	Selectable		Selectable		Options	Accessories
	Power	Size (mm)	CCT	Lumens		
AL674947	20w/30w/40w	603x603x39	35K/4K/5K	2000/3000/4000	E1 ER 4w AL585005 E2 ER 8w AL585008	Hanging kit (iron wire 1m) AL674900 2 x 2 AL674901 1 x 4 & 2 x 4 Frame for Surface mount AL674902 2 x 2 AL674903 1 x 4 AL674904 2 x 4 Drywall Recessed Cips kit AL674921 2 x 2 AL674922 1 x 4 / 2 x 4
AL674948	20w/30w/40w	603x603x39	3K/4K/6K	2000/3000/4000		
AL674953	20w/30w/40w	603x603x39	4K/5K/65K	2000/3000/4000		
AL674949	20w/30w/40w	303x1213x39	35K/4K/5K	2000/3000/4000		
AL674950	20w/30w/40w	303x1213x39	3K/4K/6K	2000/3000/4000		
AL674954	20w/30w/40w	303x1213x39	4K/5K/65K	2000/3000/4000		
AL674951	30w/40w/50w	603x1213x39	35K/4K/5K	3000/4000/5000		
AL674952	30w/40w/50w	603x1213x39	3K/4K/6K	3000/4000/5000		
AL674955	30w/40w/50w	603x1213x39	4K/5K/65K	3000/4000/5000		
Item	Single Power	Size (mm)	Selectable CCT	Lumens		
AL674980	40w	603x603x39	4K/5K/65K	4000/4000/4000		
AL674970	50w	603x1213x39	35K/4K/5K	5000/5000/5000		
AL674978	50w	603x1213x39	3K/4K/6K	5000/5000/5000		
AL674979	50w	603x1213x39	4K/5K/65K	5000/5000/5000		

Notes

- Lumen tolerance +/- 5%
- Height 31.5mm / 39mm including driver
- For Selectable Power lumens based on highest wattage
- Output Voltage 36-43VDC
- Recommended use per day 24/7 in ambient temp of 25°C. In temps >25° may result in shorter lifetime of the product
- ANSI C82.77 Surge Protection

Packing information

Model	Pieces per master	Box Dimensions (cm)	CBM (Master)	Gross Weight (KG)
2x2	4	66.5 x 16 x 67	0.0712	10
1x4	4	127.5 x 16 x 37	0.0754	10.5
2x4	4	127.5 x 16 x 67	0.1366	18.5

Model	Pieces per master	Box Dimensions (cm)	CBM (Master)	Gross Weight (KG)
2x2 Frame	20	66 x 30 x 17	0.0336	12.3
1x4 Frame	20	124 x 30 x 17	0.0632	13
2x4 Frame	15	124 x 23 x 17	0.0484	14.3



Warranty

Americanlite® is pleased to provide a 6 year limited warranty covering the LED panels on this catalogue. Americanlite® warrants that the LED panels comply with Americanlite®'s published specifications and are free from defects in materials and workmanship.

All our equipment is CE, ETL or UL approved and manufactured with approved components. Americanlite® reserves the right to change or improve the design or components of any of its products due to parts availability or changes in standards, without assuming any obligation to modify any product previously manufactured and without notice. All equipment is tested and inspected before shipment.

This warranty is void if the product is operated outside of its normal operating conditions. The foregoing warranty does not apply to failures caused by acts of God or as a result of any abuse, misuse, abnormal use, or use in violation of any applicable standard, code or instructions for use in installations, including, but not limited to, those contained in the Standards for the International Electrotechnical Commission. Americanlite® reserves and has the right to examine failed fixtures to determine the cause of failure, excessive lumen depreciation and patterns of usage.